



खादी ग्रामोद्योग आयोग
KHADI AND VILLAGE
INDUSTRIES COMMISSION

सूक्ष्म लघु और मध्यम उद्यम मंत्रालय, भारत सरकार
Ministry of Micro, Small & Medium Enterprises, Govt. of India,

सुधार कार्यान्वयन प्रभाग
REFORM IMPLEMENTATION DIVISION

No. RID/KRDP/3rd Tranche conditions /2017-18/

Date: 01.11.2017

Under Secretary,
Govt. of India,
Ministry of MSME,
Udyog Bhavan,
New Delhi – 110 011.

Sub : Compliance of 3rd tranche conditions under KRDP to evaluate the performance of 400 eligible KIs - regarding

Sir,

Kindly refer to the 3rd Tranche restructured conditions under KRDP which requires to be compiled as per the timeline of ADB.

In this regard, it is to inform that the 15th tranche condition states that "KVIC shall have evaluated the performance of four hundred (400) eligible KIs" have been fulfilled by KVIC. The status is as follows :

Finalised restructured tranche condition	Evidence	Status as on 1 st Nov 2017
KVIC shall have evaluated the performance of four hundred (400) eligible KIs.	Evaluation report on the performance of 400 KIs	Completed. Evaluation report on the performance of 400 KIs is prepared

The Evaluation Report as evidences of compliance is enclosed.

It is, therefore, requested to kindly forward the documents to ADB for further needful action.

Yours faithfully,

Dy. Chief Executive Officer (RID)

Encl: As above

Copy to :

- 1) The JS, MSME, New Delhi.
- 2) The Senior Project Officer (Urban) ADB, New Delhi.
- 3) Shri Vivek Mathur, Senior Officer, MSME, New Delhi



ग्रामोदय, ३ इर्ला रोड, विले पार्ले (पश्चिम), मुंबई ४०० ०५६
Gramodaya, 3, Irla Road, Vile Parle (W), Mumbai-400056
Tel: 022-26714320/22/25, Telefax: 022-2671 1593
Email: rid@kvic.gov.in Website: www.kvic.org.in

Khadi Reform and Development Programme
*KVIC shall have evaluated the performance of four
hundred (400) eligible KIs*
Evaluation Report
October 2017



Khadi and Village Industry Commission
Ministry of Micro Small and Medium Enterprises,
Government of India



List of Contents

List of Abbreviations.....	1
List of Figures	2
1. Background	3
2. Key Elements of DRA.....	4
2.1. Financial Allocation of the Reforms:.....	5
2.2. Implementation Structure for DRA:.....	6
3. Evaluation Approach.....	7
4. Overview of DRA sanctioned Khadi Institutions	8
5. Assessing the Impact of DRA:.....	9
5.1. Improved Equipment for Khadi Production	10
5.2. Work-shed and CFC Establishment	11
5.3. IT and Management Support.....	12
5.4. Capacity Building and Governance Reform in Khadi Institutions	14
5.5. Marketing and Publicity	15
5.6. Financial Support	17
5.7. Improved Production Efficiency.....	18
5.8. Improved Situation of Artisans	18
6. Key challenges in implementation of DRA	21
7. Conclusion.....	22
Annexure 1: Detailed list of Khadi Institutions sanctioned DRA under KRDP	23
Annexure 2: List of KIs as per phases of DRA funding	40
Annexure 3: State and zone wise list of Implements sanctioned under DRA to Khadi Institutions..	55
Annexure 4: Case Studies	57

List of Abbreviations

CAG	Comptroller and Auditor General
CAGR	Compounded Annual Growth Rate
CFC	Common Facility Centre
CKMC	Central Khadi Mark Committee
CSP	Central Sliver Plant
DO	Divisional Office
DRA	Direct Reform Assistance
DSO	Direct Sales Outlet
GoI	Government of India
IT	Information Technology
JBY	Janashree Bima Yojana
KI	Khadi Institution
KRDP	Khadi Reform and Development Programme
KVI	Khadi and Village Industries
KVIB	Khadi and Village Industries Board
KVIC	Khadi Village and Industries Commission
MDA	Market Development Assistance
MIS	Management Information System
MNREGA	Mahatma Gandhi National Rural Employment Guarantee Act
MO	Marketing Organisation
MoU	Memorandum of Understanding
MSME	Ministry of Micro, Small and Medium Enterprises
NGO	Non-Government Organisation
NIFT	National Institute of Fashion Technology
NMC	New Model Charkha
RNFS	Rural Non-Farm Sector
SHG	Self Help Group
SO	State Office
VI	Village Industries
ZKMC	Zonal Khadi Mark Committees

List of Figures

Figure 1: Overview of DRA.....	4
Figure 2: Structure of the Field Level Execution Committee (FLEC).....	6
Figure 3: Sanction of DRA segregated by KI category	8
Figure 4: Zone- wise spread of 400 KIs and DRA sanctioned	8
Figure 5: State-wise distribution of DRA institutions	8
Figure 6: Implements sanctioned under DRA zone-wise	10
Figure 7: Status of CFC establishment in 400 KIs	11
Figure 8: Machinery procured through DRA by a KI in Tamil Nadu (from left to right: Sewing machine, Hydro extractor and Dyeing unit)	12
Figure 9: IT hardware installed at a KI.....	12
Figure 10: Gender discussion with artisans in Gujarat.....	14
Figure 11: Zone-wise sales outlets sanctioned.....	15
Figure 12: Renovated sales outlet at the Gramin Kutir Silpa Bhaban in Tamil Nadu	15
Figure 13: Female weavers weaving on the new looms supplied under DRA.....	18

1. Background

The textile industry has made tremendous strides with the adoption of modern technology, branding and savvy marketing. In contrast, khadi has been relatively slower in adapting to the economic and technological advancements. As a result, the community-based production and marketing model, is neither able to gain market share nor substantially contribute to rural employment. Since the khadi artisans are dependent on the Khadi Institutions (KIs) for various khadi activities, enhancement of their earnings, empowerment and inclusion is linked directly with the wellbeing of these institutions and their growth.

At the initiation of the KRDP project in 2008, it was found that most of the Khadi Institutions were in a difficult situations with inadequate and old infrastructure (charkhas, looms, processing unit, garmenting unit, and accounting systems) and dilapidated retail outlets. There was a dire need for improved implements, better working conditions for artisans, skills for high-value products, and sales and marketing support to revitalize the sector. Therefore, strengthening of KIs was planned as an integral component of the Khadi Reform Package and providing Direct Reform Assistance (DRA) was considered for 300 khadi institutions (KIs). The key objectives envisaged from DRA are:

- Enable KIs to be self-reliant and organize khadi programme on their own without the assistance from government- Support involves provision of new charkha / looms, CFC, working capital support, renovation of sales outlets, IT / MIS
- Providing financial assistance to the extent of Rs.19 million to each KI under Production and Marketing Reform for Normal and Rs.7.6 million for Special category KIs

Under the KRDP program, KVIC developed and adopted a comprehensive reform plan in 2010-2011. Initially, 300 KIs were identified for providing direct reform assistance through the reform plan (later the target has been increased to 400 KIs during the restructuring of the program). The reform plan was disseminated through two national level stakeholder workshops during 2011-2012. To identify the 400 Khadi institutions, management audits were conducted by Comptroller and Auditor General (CAG) empaneled external auditors in various phase in 2013-17 period. 646 KIs eligible for DRA were audited in five phases. The audits were conducted based on five major parameters i.e. Infrastructure, Financial Performance, Management and Human Resources, Marketing and Institutional Governance. Based on the analysis of KIs on above parameters, the KI were rated on a scale of 1 to 10 on each parameter as well as overall performance. The KIs which were rated Excellent, Very Good and Good by the Auditors were considered for DRA which totaled to 400 KIs as required under the project.

The shortlisted 400 KIs developed Action Plans for the support required under DRA. The Action Plans charted out the financial, production and infrastructure capacity of the institution, additional capacity required in terms of implements and infrastructure (CFCs, workshed establishment, renovation of sales outlets), capacity building, IT, marketing (publicity) and financial support required and the budgets for each of these. The Action Plans also projected the proposed outcome targets of the programme in terms of increase in production and beneficiaries outreach. After scrutiny, the Action Plans were approved by the KVIC State and Central offices and placed for

approval of the Standing Finance Committee (SFC) of KVIC. The KIs which were sanctioned DRA signed an MoU with KVIC for implementation of the comprehensive reform plan. The MoU laid down the roles and responsibilities for both KVIC and the KIs. Total DRA of Rs. 3,093 million was sanctioned in a phased manner to all 400 KIs by 31 October 2017. 87 KIs received funding in the first phase between 2013 and 2016 and the remaining 313 institutions in the second phase of funding in the year 2017. These 313 KIs are still in the process of procuring implements and services to begin implementation of DRA reforms.

This evaluation report covers the performance assessment of the 400 KIs covered under DRA. Considering that the second phase assistance is still in progress, the performance evaluation covers the assessment of 87 KIs covered under Phase I on all the reform parameters whereas the assessment of balance 313 KIs are on reform parameters where progress has been achieved till the date of assessment.

2. Key Elements of DRA

Direct Reform Assistance (DRA) was extended to select 400 KIs to emerge as self-reliant institutions, enabling them to organize khadi programmes on their own without assistance from the government.

They elements of DRA are:

I. **Production Reforms:**

Production reforms is aimed at improving production efficiency of the Khadi Institutions through various interventions covering the entire production value chain. These are:

- **Procuring Implements:** Providing Production efficient implements including NMC charkhas and quality looms to the 400 institutions.
- **Establishing a Common Facility Center (CFC):** Providing funding to KIs to procure machinery such as Ready warp, yarn dyeing, fabric printing, readymade garment facilities, testing laboratories, services and maintenance etc for the CFC (as mentioned in their Action Plan). Partial funding was given for establishing a workshed to set up machines and get artisans to work together.
- **Installation of procured machinery:** Financial support to ensure smooth implementation of the charkhas, looms and other machinery procured by the KI.
- **IT intervention:** A feature of DRA is to digitize key process of the KI such as maintaining accounts, employment records, fund utilization and managing the KIs page on the KIMIS. KVIC provided support in hiring and paying salaries for an IT officer for each KI.

Figure 1: Overview of DRA



- **Training:** Support training of weavers and spinner to use the new implements, as well as other trainings pertaining to improving capacity of the KI employees, IT staff to strengthen implementation capacity of the institution.
- **Working capital:** KVIC provided Rs. 1.4 million as working capital to KIs for raw material and improved implements enabling KIs to target higher production.
- **Managerial support:** Support to KIs to hire a Reform Implementation Officer for smooth implementation of DRA.

II. **Marketing Reforms:**

Marketing reforms is aimed at improving the market perception and the final product value of Khadi products through the following identified interventions:

- **Renovation of sales outlet:** KIs were supported to renovate their sales outlet, making them more appealing to increase footfall and sales.
- **Inventory management:** To ensure efficient production inventory management support was provided to KIs.
- **Local publicity:** Funding provided to KIs to enable them to promote and market their products and events through developing leaflets, newspaper ads, TV ads, etc.

2.1. Financial Allocation of the Reforms:

KIs receiving DRA were segregated in two categories. Institutions belonging to the 'Special' category are defined as those located in hilly, border or Left Wing Extremism affected areas, whereas, all the other institutions have been categorized as 'Normal'.

The maximum financial allocation available for each of these categories has been highlighted in the table below:

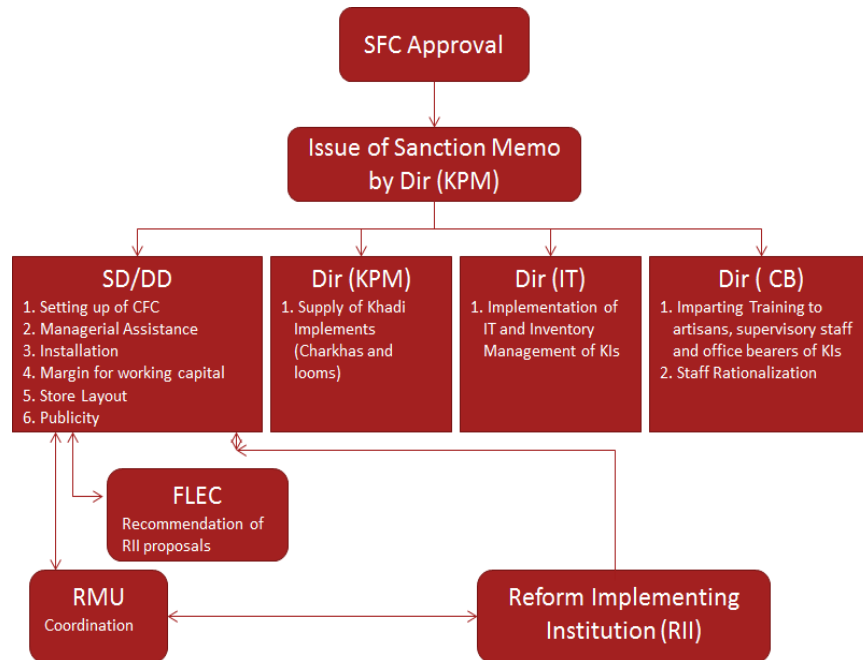
S.No.	Particulars	Normal category KIs (in INR million)	Special category KIs (in INR million)
A. Production Reforms			
1	Implements [Charkhas + looms]	2.5	1.5
2	Common Facility Centre (CFC)	1.5	1.0
3	Work shed for CFC	0.5	0.8
4	IT and Managerial	0.8	0.5
5	Training	0.3	0.3
6	Installation	0.1	0.1
7	Margin money for Working Capital	1.4	1.4
	Total (A)	7.1	5.6
B. Marketing Reforms¹			
8	Store layout	1.9	1.5
9	Inventory management	1.0	0.0
1	Local publicity	0.5	0.5
	Total (B)	3.4	2.0
	GRAND TOTAL (A+B)	10.5	7.6

¹ A budget of Rs. 1.4 Million per KI for staff rationalization was dropped due to logistical challenges by KVIC.

2.2. Implementation Structure for DRA:

The Field Level Execution Committee (FLEC) was established to identify and approve DRA for eligible institutions. The structure of FLEC is as follows:

Figure 2: Structure of the Field Level Execution Committee (FLEC)



Key activities undertaken by FLEC are:

- Scrutinize the proposal of the Reform Implementation Institution (RII) in consonance with the scheme guidelines and sanction received from Central Office. Based on the recommendation of FLEC, State/Divisional Director will arrange for release/utilization of fund for undertaking the KRDP activities.
- Finalize the Tender / Quotation for procurement of goods and services envisaged in the sanction memo which also includes finalization of the terms and conditions of Tender / Quotation for execution of the contract including payment terms
- Work Order/Purchase Order for execution of the work / procurement of goods shall be placed based on recommended by FLEC
- Monitoring and review of the activities carried out by RII at least once in a month.

The composition of FLEC is under:

- i. State / Divisional Director
- ii. Representative of State Federation of KIs/Parent body of RII
- iii. CEO of State KVIB or his representative
- iv. SLBC Convener / Lead District Manager
- v. Accountant of State/Divisional Office
- vi. Secretary/Chairman of RII Concerned
- vii. Assistant. Director/Accounts Officer or In-charge, RMU, State/Divisional Office

3. Evaluation Approach

This performance evaluation has been conducted based on secondary data collected from the 400 DRA KIs². As explained earlier, this evaluation looked at the performance of 87 KIs covered in first phase on all the reform parameters as these institutions have gone through the entire cycle of reforms as envisaged under the comprehensive reforms plan³. The Institutions that were sanctioned DRA in 2017 are still to complete the entire cycle of reforms and hence only evaluated on the certain parameters of the reform framework which includes adoption of khadi mark, operationalization of MIS, capacity building trainings and adoption of social security measures by the KIs. For these 313 KIs process of procuring the implements, creating CFCs and renovation of sales outlets are in initial stages, hence the scope of analyzing the DRA impact on the production, sales and artisan benefits are limited.

During the course of this evaluation, 9 field visits were conducted to 2 KIs in the north, 1 in central, 2 in south, 2 in east and 2 in the west zones. Best practices of 7 institutions have been charted out in detail (refer to Annexure 4). During the visits, other than the review and consultations, sessions on gender mainstreaming and environmental aspects were conducted with Khadi artisans and employees at each location. These assessed the level of gender sensitivity, access to basic services for women artisans, equal wages amongst other factors.

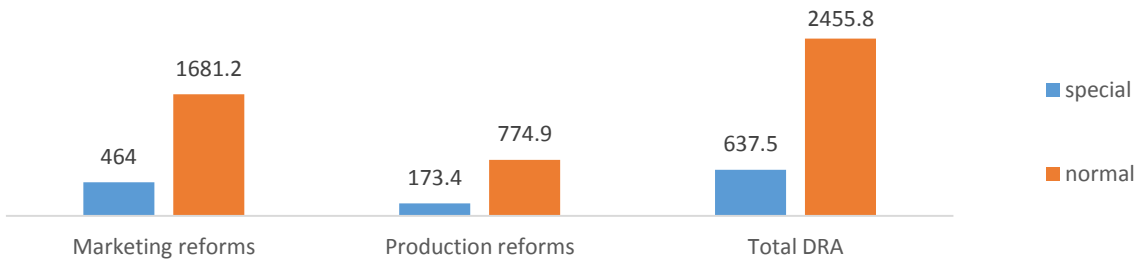
² These 400 institutions comprise a mix of cotton, silk and woolen khadi producing KIs

³ Refer to Annexure 2 for a detailed list of the KIs sanctioned DRA as per the 2 identified phases

4. Overview of DRA sanctioned Khadi Institutions

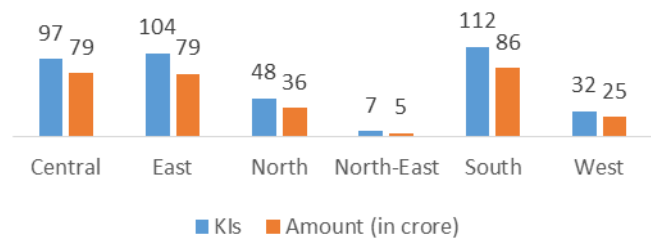
- DRA worth Rs. 3093 million was sanctioned to 400⁴ KIs across the country. Of this Rs. 637 million was sanctioned to 100 Special KIs and Rs. 2456 million was sanctioned to 300 Normal category KIs.

Figure 3: Sanction of DRA segregated by KI category



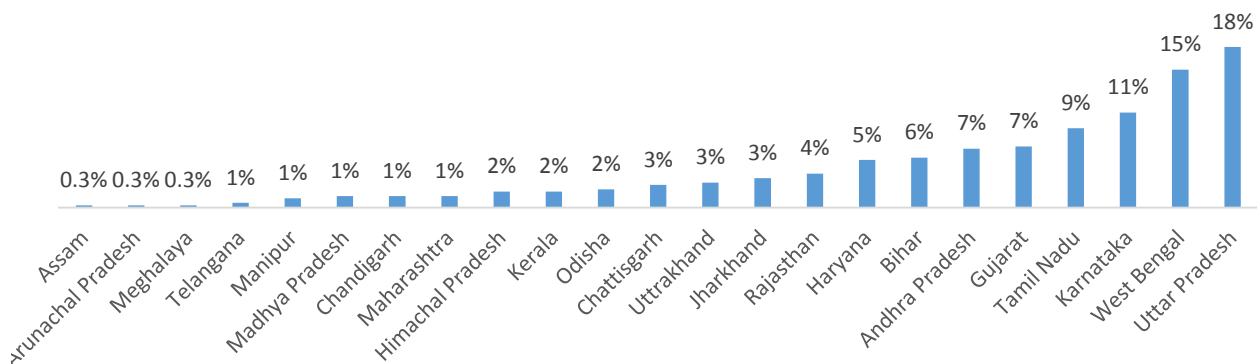
- Of the 400 KIs 24% are located in the central, 26% in east, 12% in the north, 1% in the north-east, 28% in the south and 8% in the west zones⁵. Therefore, more than half of the institutions that received DRA belonged to the central and south zones (as reflected in Figure 3).

Figure 4: Zone-wise spread of 400 KIs and DRA



- The top 5 states with the maximum number of shortlisted institutions are in Uttar Pradesh, West Bengal, Karnataka, Tamil Nadu and Gujarat (as shown in Figure 4). Through DRA support 4 Khadi Institutions have been revived in Manipur.

Figure 5: State-wise distribution of DRA institutions



⁴ A detailed list of the DRA sanctioned to 400 KIs can be found in Annexure 1 of this document

⁵ The detailed spread of amount sanctioned institution wise can be seen in Annexure 1 of this document.

- 25% of the institutions (i.e. 100 KIs) that received DRA belonged to the 'Special' category and are located in hilly, border or left wing extremism affected areas. Of these 13 are in the central, 39 in the east, 11 in the north, 7 in the west, 6 in the north-east and 24 in the south.
- It was found that about 14% of the 400 KIs currently (2016-17) are at a nascent stage of growth and have less than Rs. 1 million worth of funds. One-fourth of these institutions had corpus funds of more than Rs. 10 million in 2016-17.

5. Assessing the Impact of DRA:

This section shall primarily analyse the DRA sanctioned across the identified parameters as well as present findings from the field from the 87 Khadi Institutions that received DRA funding in the first phase.

For the 313 Khadi institutions that received funding in 2017, procurement is underway. The progress update as on October 2017 for these institutions is as follows:

No of Charkha Sanctioned	19520 (as on 15 th October 2017)
No of Reeling basins sanctioned	1065 (as on 15 th October 2017)
No of Looms Sanctioned	4113 (as on 15 th October 2017)
Establishment of CFC	All undergoing procurement
MIS	The software has been made operational for 313 KIs and KVIC has populated master data for these KI for carrying out transactions through MIS.
IT staff appointed	40 have appointed, 273 pending (as on 15 th October 2017)

Some of the key reform elements which have been adopted and achieved by all the 400 KIs are:

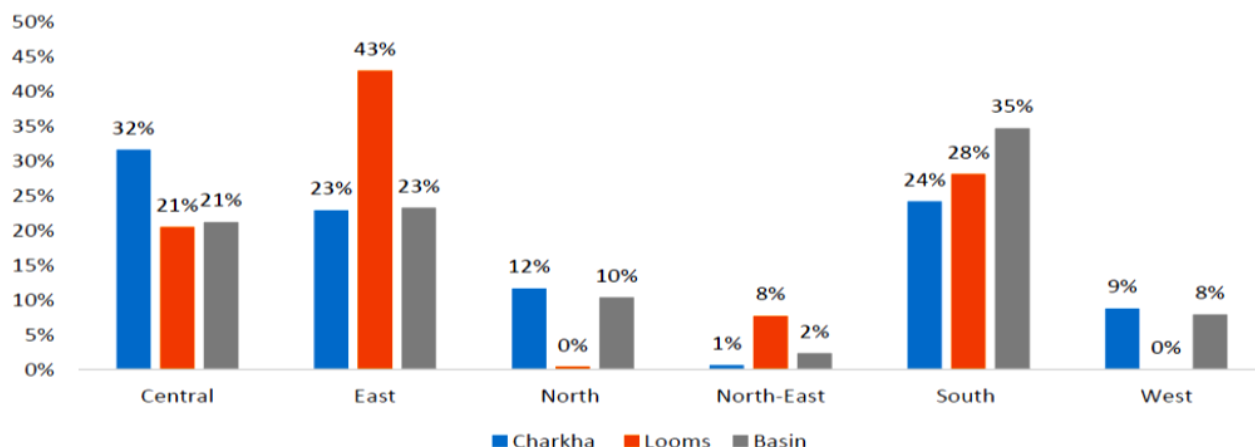
- Adoption of Khadi Mark
- Transfer of artisan benefits through bank account for all artisans and linking it to Aadhar
- All artisans and weavers are covered under Jana Shree Beema Yojna and Artisan Welfare Fund
- Representation of artisans in management committee with at least one women artisan in majority of the KIs
- Assessment of rawmaterial requirement completed for all 400 KIs
- Received grant for working capital ranging from INR 0.25-1.40 million
- Supply of hardware and accessorioies for implementation of Khadi MIS in all 390 KIs who opted for such support
- Operationalisation of Khadi MIS in all 400 KIs with 28% operating all the functionalities

The detail performance assessment covered in following sections largely focuses on the other reform parameters for 87 KIs which are in advanced stage of DRA implementation.

5.1. Improved Equipment for Khadi Production

Total of 33,939 implements (including 27,277 charkhas, 5,445 looms and 1,217 basins) worth Rs. 623 million were sanctioned to 400 KIs across 5 zones. Charkha and looms manufacturers were empaneled through a process of competitive bidding. 20 Charkha manufacturers were identified and approved by KVIC to supply 8 spindle New Model Charkhas (NMC) to the 400 KIs. The graph (Figure 6) below represents the spread of implements sanctioned zone-wise across India.

Figure 6: Implements sanctioned under DRA zone-wise



Findings from the field:

Field visits and data analysis of the 87 institutions that received DRA in the first phase suggest the following:

- KIs have experienced an average increase of about 40% in yarn production. This can be attributed to the introduction of New Model Charkhas (NMCs) to them through DRA. Further NMCs have led to an improvement in quality of the thread spun and an overall increase in the wages of the spinners. In north and central India, some institutions have set up some charkhas in the homes of women spinners and kept others in the work shed for artisans to come and work on.
- For the 87 (first phase) KIs there has been a 38% increase in the number of looms procured. However, there have been certain challenges with respect to the usage of the looms. Findings from the field (especially in the south zone) suggest that looms and spare parts received by certain institutions were incompatible, hence these institutions have not been able to utilize the new looms.

Improved productivity with NMCs

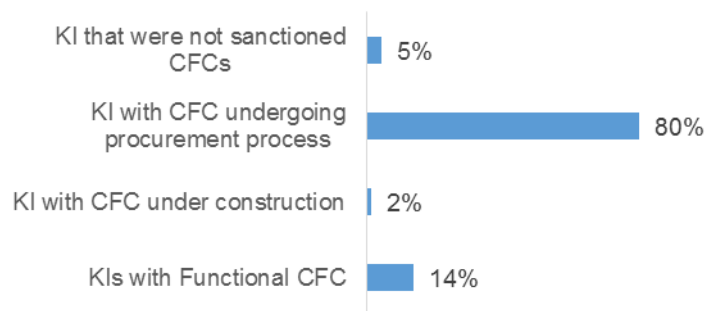
Gandhigram Khadi and Village Industry Public Charitable Trust in Dindigul district of Tamil Nadu is benefiting from the introduction of the 8 spindle New Model Charkhas. The institution currently has 145 (75 were procured through DRA) NMCs. The introduction of NMCs has not only increased production of yarn by over 87% but has also made the work less tedious and efficient for the spinners. As a result, the wages of spinners have increased by over 80%. The overall quality of the yarn produced has also improved as a result of this.



5.2. Work-shed and CFC Establishment

A total of 368 work-sheds worth Rs 206 million have been sanctioned for the KIs that required it. Additionally Rs. 370.04 million were sanctioned to procure machinery for the CFC. 61 KIs from the first phase of DRA funding have established 104 functional CFCs. Khadi institutions that received funding in the second phase are currently in the process of procuring contractors for building/refurbishing the work-shed and procuring machinery for the CFC.

Figure 7: Status of CFC establishment in 400 KIs
(as on October 2017)



Findings from the field:

Key findings from the analysis of 87 institutions that received DRA in the first phase are:

- KIs are ensuring that new work-sheds and CFCs being constructed have an appropriate working environment, separate washroom facilities for women, etc.
- Some KIs have invested additional institutional money to meet the entire cost of the Work-shed and CFC intervention as the unit budget set for these items under DRA are inadequate to meet the entire expenses
- The machinery procured has enabled institutions to develop new product lines such as stitched garments, printed khadi fabrics, etc.
- Construction of work-shed has supported the artisans by providing them a common place to work. Working in a group, along with access to NMC and looms has helped in improving the efficiency of the artisans and they look forward to coming to work every day.

- Spinners in certain institutions (especially those located in the northern and central zones) prefer to work from home instead of coming to work-shed to spin as they spend most of their day in household work. To address this issue Shri Gandhi Seva Sadan (Bayana, Rajasthan) developed innovative Artisan Work Sets containing equipment, thread and other tools required for spinning.

Figure 8: Machinery procured through DRA by a KI in Tamil Nadu (from left to right: Sewing machine, Hydro extractor and Dyeing unit)



5.3. IT and Management Support

A total sum of Rs. 268.5 million has been sanctioned for IT and management support interventions (including procuring a computer for each Khadi Institution and payment of salaries for the Reform Implementation officer and IT staff hired) to the 400 Khadi Institutions.

Figure 9: IT hardware installed at a KI

As a part of the IT interventions, production centres were provided with a computer to update production details. Sales centres were provided computers with pre-installed KI-MIS software and SIM based hand-held devices for billing purpose. Barcode readers were also sanctioned to the institutions which allow them to scan the code and generate bill for the customers.



As on 31 October 2017, the master data required for carrying out transactions has been uploaded in MIS for 1837 KIs. However, it will take some time for all KIs to fully utilise all the functional modules of the MIS. KVIC has supplied the necessary hardware items to around 390 KIs that had indicated the need for such support as part of their action plans and has set-up a help-desk at KVIC Central Office to monitor the MIS implementation.

On the management front, KIs are supported to hire a Reform Implementation Officer to support the institution in implementing the sanctioned DRA. Most of the 87 KIs covered under first phase have appointed an RIO.

Findings from the field:

Key findings from the 400 institutions that received DRA are:

- Around 390 KIs have received the hardware and accessories for implementation of the Khadi MIS
- Majority of the 87 KIs covered under first phase have appointed an IT staff and this has helped them in utilising most of the functionalities available in KIMIS. Balance 313 KIs have initiated the advertisement process to appoint such staff
- For those KIs who have initiated the implementation and are using all modules are finding it very beneficial as it helps in compiling data faster and in more efficient manner.
- Access to emails had led to easier coordination with the State and Divisional offices and as well as increased outreach to potential buyers.
- Certain institutions have opened facebook accounts and registered on e-commerce sites to promote their products and sell online.
- The Market information system as available on KIMIS has been found to be useful in decision making regarding production and sales, as KIs can produce goods based on demand indicated by trends in their sales.
- A large number of institutions experienced regular issues with the KIMIS server, disabling them from accessing the MIS robustly.
- Observations from the field suggest that institutions that have not appointed a dedicated IT staff yet are experiencing issues with utilizing the IT hardware and accessing the MIS. The low penetration of internet and limited electricity supply in rural areas are also impacting the effectiveness of the IT intervention.

Leveraging the vast array of digital opportunities

Satish Sarvodaya Varati Khadi Institution in Murshidabad, West Bengal is utilizing the IT benefits to the maximum. They have a full time IT staff incharge of updating the MIS regularly, maintaining accounts, employment records and fund utilization digitally. The institution has hired a marketing personnel for piloting online marketing through popular **e-commerce websites like indiamart.com**. The institution has a dedicated website and is leveraging social media and has an active facebook and twitter account that promotes its products and generates awareness about the KI.



5.4. Capacity Building and Governance Reform in Khadi Institutions

Capacity building and improved governance of Khadi institutions has had a positive impact on the overall functioning of the institutions, their production, sales and employee and artisan satisfaction. A total sum of Rs. 101.4 million have been sanctioned for training and capacity building support on DRA covering 400 KIs. 28 workshops have been organized for 783 office bearers of KIs with an objective of generating awareness about the benefits of DRA and facilitating DRA's implementation. Artisan trainings were also conducted in select KIs, aimed at developing soft skills in artisans enabling them to use the new implements.

Findings from the field:

Key findings for the 400 KIs are:

- In majority of 400 KIs, there is at least one women artisan representation in management committee
- In 87 KIs covered under first phase, the number of artisans as part of the management committee has remained more or less stagnant with an average representation of 25%. Certain institutions also have 50% representation of artisans in the management committee. Most institutions of these are from the South and Eastern zones of India. It has been found that involvement of artisans in the committee has led to greater sensitization of their issues amongst the KI leadership.

Figure 10: Gender discussion with artisans in Gujarat



- Institutions from the South and East zones typically have more than 25% representation of women artisan in the committee.
- Over 5000 spinners and weavers have received training on NMC spinning and the new looms, respectively⁶. Trainings were also conducted for master trainers so that they can support artisans in transitioning from traditional implements to advanced NMC and looms.

Better decision making with participation of artisans

In Pragatipath Laghu Utpadak Samiti, Jaspur, Uttarakhand artisans comprise the entire Management Committee with 44% representation of women artisans. The Office Bearers and artisans both responded that increased participation of artisans in the decision making process is helping the KIs to enhance overall performance of the KI and increased transparency in operations.

Figure 11: Zone-wise sales outlets sanctioned

5.5. Marketing and Publicity

A total of Rs. 127.7 million have been sanctioned for developing publicity material under DRA for the 400 Khadi Institutions. All these institutions have adopted the Khadi Mark.

Renovation of 739 Sales outlets (total funds released- Rs. 466.2 million) has been sanctioned under DRA of these of 118 sales outlets have been renovated. On 02 October 2017, 60 renovated outlets were inaugurated online by Hon'ble Minister, MMSME.

Additionally, Rs. 312 million have been sanctioned to 400 Institutions for inventory management.

Findings from the field:

Key findings from the 87 KIs from the first phase that have implemented marketing and publicity reforms are:

⁶ Majority of these belong to the 87 KIs that received funding the first phase have not commenced yet.

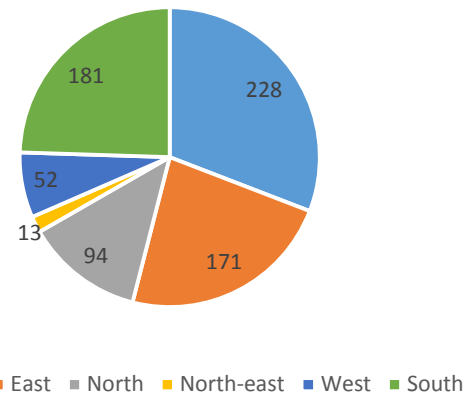


Figure 12: Renovated sales outlet at the Gramin Kutir Silpa Bhaban in Tamil Nadu



- Institutions have benefited from the renovation of sales outlets leading to an increase in footfall, fast moving stocks and higher sales. Increased footfalls and appealing outlets have also encouraged some KIs to diversify their products and develop new higher end products.
- Certain KIs have also put air-conditioners in the store to improve customer experience and CCTV cameras to monitor.
- The publicity budget has largely been utilized to develop printed brochures/leaflets in newspapers, short TV add for local channels, calendars, product catalogues to attract bulk buyers, print eco-friendly carry bags for customers.
- Some institutions have geo-tagged their location and also enlisted on e-commerce sites such as Indiamart.com, Flipkart.com.
- Certain Institutions have forged tie-ups with designers to develop new products. Some have even hired in-house designers to develop market relevant designs and products.
- These interventions have contributed to an average 42% in sales (between 2012-13 and 2016-17) of the 87 KIs. Of these 7 KIs (largely belonging to the 'Special' category) have experienced a jump of over 100% in the sales.

Adopting innovative marketing and publicity strategies to increase sales

Khadi Gramudyog Sangh (Narar) in Kurukshetra district of Haryana has undertaken several innovative marketing techniques which have contributed to 194% increase in sales from Rs. 29.3 million to Rs. 87.3 million between 2012-13 and 2016-17. Some of its key interventions are:

- The KI has made a movie to be telecasted on local cable, which highlights the range of products being developed by the KI.
- The KI has started production of **denim khadi and yoga kits** since July 2015, which has received an overwhelming response from the local market.
- KGS owns 5 sales outlets for sale across Kurukshetra and nearby areas, of which 2 are air-conditioned
- The KI has obtained ISO 9001: 2008 certificate in year 2015
- Diversification of sales by selling through its 5 outlets, the Delhi Khadi Bhawan and through contract orders from the railway department.
- Piloted sale through popular **e-commerce websites** such as Flipkart and Snapdeal
- Hired an in-house designer to make market relevant products and improve current designs
- Active facebook page and website (kgsnarar.com) for awareness generation on products
- Participation in India International Trade Fair as well as other national level exhibitions. The KI is looking forward to participate in international exhibitions this year
- The institution has also developed a printed product catalogue
- Printed branded carry bags
- **Paytm facility and swipe machines installed at sales outlets** to ease payments



5.6. Financial Support

A total sum of Rs 537.8 million has been sanctioned as working capital for all 400 KIs under financial support. Each insitution received about Rs. 0.25 million to Rs. 1.4 million as working capital.

Findings from the field:

Key findings from the 87 KIs that received DRA in the first phase indicate:

- While most insitutions welcomed the working capital, it was felt that the amount was not substantial. Especially for insitutions in the ‘Special’ zones higher working capital is required as accessing raw material and crucial services is more expensive.
- Additionally, marketing and financial support has encouraged certain DRA receiving insitutions in the South have recently attempted to adopt market linked pricing for premium products.

5.7. Improved Production Efficiency

A key objective of the DRA assistance was to ensure an overall improvement in the production quantity, quality and efficiency of the Khadi Institutions.

Findings from the field:

For the KIs that received funding in the first phase, on an average, most insitutions have experienced a 60% increase in production quantity from 2012-13 to 2016-17. This could be attributed to the new charkhas and looms provided that lead to an improvement of production efficiency. An average 139% increase in yarn production was recorded for these insitutions over the last 4 year period. For majority of these insitutions there has been about 70% increase in income through sales. Less than one-fifth of the insitutions experienced negative growth in terms of production, majority of these belong to the southern zone of the country.

Figure 13: Female weavers weaving on the new looms supplied under DRA



5.8. Improved Situation of Artisans

Through the envisaged production and marketing reforms, a key object of DRA was also to improve the situation of artisans such as reducing drudgery through providing better quality implements, improving the financial situation of artisans through increased wages, gender based equality amongst artisans, encouraging KIs to ensure insurance coverage for artisans and several other reforms.

Findings from the field:

The 87 Khadi Institutions that received DRA in the first phase of funding have shown positive impact such as increase in employment of spinners and weavers, increased wages and proactive KI support to artisans in terms of access to insurance and the Artisan Welfare Fund. Key findings include:

- There has been a 12% increase in the number of spinner employed. However, the wages of the spinners have increased significantly by over 400% between 2012-13 and 2016-17. 20% of the KIs experienced a jump of over 100% in the spinners wages which could be

attributed to the fact that they were paid much lower than typical average wage that other KIs did in 2012-13. Additionally, findings from the field suggest that the NMC charkhas have led to a manifold increase in the quantity and quality of yarn spun in a day, therefore directly impacting the wages of the spinners. Spinners in most institutions are largely women and an increase in their daily wages is bound to have a positive impact on their overall wellbeing.

- While there has been a significant increase in monthly wages of spinners, those of the weavers have only risen by 60% between 2012-13 and 2016-17. In 'Special' institutions in the DRA has deeply benefitted weavers leading to double or triple the increase in employment.
- As mandated, the KIs contribution to the Artisan Welfare Fund (AWF)⁷ launched in 2013 has increased by 152% amongst the 87 institutions. Institutions typically utilize funds from AWF incase artisans require financial help for marriage, medical treatment, education of children, construction of house/purchase of property etc. For instance, the Shri Gandhi Seva Sadan (Bayana, Rajasthan) pays an additional Rs.1,200 to its artisans towards the education of their children.
- Almost all artisans are covered under the Janashree Bima Yojna which is the group insurance scheme for khadi workers. However, field observations suggest low awareness of the scheme and the Artisan Welfare Fund amongst the artisans.
- A few institutions have also linked their artisans to other schemes such as the Atal Pension Yojna, Mudra scheme, Provident fund facilities, National Health Safety Group, etc.
- Certain institutions such as Pragatipath Laghu Utpadak Samiti (Jaspur, Uttarakhand) and Khadi Gramodyog Sangh (Narar, Haryana) have set up in-house residential facilities for migrant artisans.
- As prescribed in the MoU signed with the 400 KIs, artisans have not been organised in SHGs by the institutions. Though, several artisans from KIs, especially in South, East and West zones are members of SHGs formed by gram panchayat or local NGOS.

⁷ Khadi institutions are required to contribute 12 percent of wages of artisans to AWF whose benefit is extended for the welfare of all artisans except those who are salaried employees of khadi institutions.

Empowerment of female Khadi artisans

- As a part of DRA reforms, KIs have setup separate toilets for female workers and artisans
- Most institutions ensure equal pay to male and female artisans as the payment is made based on the quantity of yarn spun or fabric woven
- On an average women artisans form 16% of the Management Committees of the first phase 87 KIs
 - The representation is about 25% in majority of the KIs located in Andhra Pradesh, Manipur and West Bengal.



Enhancing benefits for artisans

Satish Sarvodaya Varati Khadi Institution in Murshidabad, West Bengal has been proactively prioritizing and investing the welfare of the spinners and weavers that work with them. They regularly support training of artisans to upgrade their skills and have promoted participation of artisans in national awards and facilitated their visit to other state level award ceremonies. Well performing artisans are incentivized and rewarded. Recently, artisans who had spent over 10 years with the institution were recognized for their contribution on the 55th Foundation day of the Institution.

Artisans were trained on financial literacy (on concepts such as savings, opening a bank account, etc.) and banking transactions. 98% of the institution's artisans are enrolled in the Janashree Bima Yojna and are made aware of the benefits of the scheme. On the health front, the institution organizes regular eye-checkups and give spectacles to artisans that require them.



6. Key challenges in implementation of DRA

- i. **Delayed implementation due to Initial resistance and complex procedural requirements:** There has been significant delay in programme completion. Original program was to be concluded in 2013 and it has been extended to December 2017. This can be partly attributed to the procedural requirements and also to the initial resistance of KIs in embracing the reforms. To start off, the response and participation of stakeholders was inadequate due to lack of understanding and confidence. The KIs found the process of eligibility and implementation of DRA quite tedious and therefore many of them were not willing to participate in the reforms process. This was further aggravated by shortage of staff at State/Divisional Offices.
- ii. **Limited availability of working capital:** Availability of working capital has emerged as a major constraint. With increased production through NMC, higher working capital is required. Many of the KIs have spent their own money in renovation of sales outlet and hence their own capital has decreased.
- iii. **Remote location of KIs:** KIs are widely dispersed with some of them located in very remote locations. These KIs have limited connectivity, making dissemination of information as well as that of reform package very difficult. Especially for the 'Special' category KI in the hills, border region and LWE affected areas material costs for construction are much higher. This essentially implies that the institution has to invest a higher amount of money to build the workshop and renovate sales outlets. In addition to this, hiring suitable contractors as per the prescribed procurement process is challenging. For instance, in Uttarakhand the procurement process has to be conducted a second time due to lack of minimum number of applications by construction companies.
- iv. **Challenges with implements supplied:** Certain institutions experienced difficulties with the new looms supplied as the spare parts received were not compatible. Additionally, the suppliers are unresponsive regarding replacement of the faulty parts.
- v. **IT related challenges:** Most KIs in rural areas tend to experience electricity connectivity issues and limited access to internet, unable to make optimum use of IT reform interventions. Additionally, for KIs in remote and hilly areas hiring suitable IT staff fitting the set out criteria is difficult. Therefore a slight relaxation in the IT staff's eligibility criteria might be suggested.
- vi. **Capacity building and awareness generation about the MIS:** Zonal training for the use and benefits of the MIS need to be conducted regularly in the initial stage as KIs need to be hand-held to use KIMIS appropriately.
- vii. **Limited usage of Khadi Mark:** While Khadi Mark has been adopted by all institutions, its usage is still limited. It has been observed that several KIs don't use the tags on all products.

viii. **Artisans lack awareness of welfare schemes:** In most KIs artisans were unaware of the schemes and benefits such as JBY and AWF available for them.

7. Conclusion

All the 400 KIs covered under DRA have adopted the comprehensive reform package. Broad level reform measures like direct benefit transfers to artisans through bank account, adoption of khadi mark, operationalization of Khadi MIS and representation of artisans in management committee has been achieved for all 400 KIs.

However, only 87 KIs have achieved significant progress in production, marketing and financial reforms envisaged under KRDP considering that the program has been implemented by these KIs for 2-3 years. Findings of the 87 Khadi Institutions that implemented DRA in the first phase reveal increase in artisan earnings and improved production and sales through quality infrastructure, usage of efficient implements, steady adoption of IT and digital media, intensive capacity building of artisans and workers, strengthened management and governance capabilities of KIs and strategic marketing and publicity.

Learnings from 87 Khadi Institutions can be further strengthened to improve implementation for the next 313 Khadi Institutions. Additionally, a robust monitoring mechanism and an end-term assessment may be undertaken in 12 months' time to assess the impact of DRA on all 400 KIs.

Annexure 1: Detailed list of Khadi Institutions sanctioned DRA under KRDP

S.No	Name of KI	Zone	Category	Production reform sanctioned (in INR million)	Marketing reforms sanctioned (in INR million)	Total (in INR million)
1	Madhya Bharat Khadi Sangh, Po Jiwajiganj, Gwalior	Central	Normal	6.59	3.20	9.79
2	Parvatiya Gram Swaraj Mandal, Kunj PO Jayanti, Almora	Central	Normal	3.77	2.82	6.59
3	Pragatipath Laghu Utpadak Samiti, Mol Natha Singh, Jaspur	Central	Normal	6.68	1.42	8.11
4	Kshetriya Shri Gandhi Ashram, Subhash Nagar, Gonda	Central	Normal	7.00	3.40	10.40
5	Bhuraj Seva Sansthan, Mohaliya Shivpar, Hardoi	Central	Normal	6.38	2.80	9.17
6	Gramin Vikas Ashram, Naipalpur, Sitapur	Central	Normal	6.31	1.66	7.97
7	Kshetriya Shri Gandhi Ashram, Naipalpur, Khairabad, Sitapur - 261001	Central	Normal	6.30	2.10	8.40
8	Vinoba Gramodyog Vikas Sansthan, Kaushal Bhavan Po, Wanda	Central	Normal	6.36	1.97	8.33
9	Kshetriya Shri Gandhi Ashram, Chanauda, Almora (Uttarakhand)	Central	Special	5.42	1.75	7.17
10	Kshetriya Shri Gandhi Ashram, Gauchar, Chamoli (Uttarakhand)	Central	Special	4.95	1.95	6.90
11	Man Sarovar Uni Khadi Katai Bunai A.U.S. Samiti Ltd., Pithoragarh	Central	Special	4.66	0.10	4.76
12	Kshetriya Shri Gandhi Ashram, Barabanki - 225003	Central	Normal	5.83	2.60	8.42
13	Sarvodaya Samiti Sarguja	Central	Special	5.60	2.00	7.60
14	Baster Jilla Khadi Gramodyog Sangh, Jagdalpur	Central	Special	5.60	2.00	7.60
15	Khadi Gramodyog Vikas Sangh, Dhamtari	Central	Special	5.53	2.00	7.53
16	Kanker Mahila Khadi Sangh Sangh, Kanker	Central	Special	5.60	2.00	7.60
17	Baster Adimjati Khadi Gramodyog Sangh, Jagdalpur	Central	Special	5.60	2.00	7.60
18	Kshetriya Shri Gandhi Ashram, Akbarpur, Ambedkar Nagar (UP)	Central	Normal	5.04	2.00	7.04
19	Kshetriya Shri Gandhi Ashram, Ratanpura, Gazipur (UP)	Central	Normal	4.99	2.00	6.99
20	Sambhav Khadi Gramodyog Sansthan, Kudhe Khurd, Chandhauli	Central	Special	2.48	0.90	3.38
21	Udaya Khadi Sewa Ashram, Chakiya, Chandhauli	Central	Special	2.38	0.85	3.23
22	Gram Swavalambi Vidhyalay, Raniwan, Faizabad (UP)	Central	Normal	5.98	3.40	9.37

23	Khadi Gramodyog Mandal, Post Rasganj, Dist. Kasganj - 202123	Central	Normal	6.79	2.90	9.69
24	Shri Khadi Vikas Sansthan, Post Ramnagar, Tal Chandpur, Nurpur, Bijnor - 246734	Central	Normal	6.74	3.10	9.84
25	Shri Khadi Sewa Ashram, Gallakheri, Post, Rajakatajpur, Nurpur, Bijnor - 246735	Central	Normal	6.54	3.00	9.54
26	Roshan Gramodyog Sansthan, Sambhal, Vill Santhal, Tal Chandausi - 244414	Central	Normal	6.52	2.70	9.22
27	Sarvoday Khadi Ashram, Chhara, Aligarh, Tal Atnauli - 202123	Central	Normal	6.64	2.60	9.24
28	Kaid Khadi Gramodyog Vikas Samiti, Muradabad, Tal Kath, Post Nodha - 244001	Central	Normal	6.79	2.90	9.89
29	Bunkar Gramodyog Samiti, Chharra, Aligarh - 202130	Central	Normal	6.64	2.50	9.14
30	Gramodyog Seva Samiti, Sambhal, Post Hazaratnagar, Tal Gashi - 244303	Central	Normal	6.74	2.10	8.84
31	Amit Khadi Gramodyog Sansthan, Shamli, Post Khandanawali, Tal, Kainara - 247776	Central	Normal	6.74	3.20	9.94
32	Shanti Niketan Etah, Post Awagarh House, PO Road - 207001	Central	Normal	6.55	2.70	9.25
33	Saghan Kshetra Vikas Samiti, Bareilly, Post Aonla - 243301	Central	Normal	6.84	2.90	9.74
34	Kshetriya Shri Gram Swarajya Ashram, Bareilly, Post Sindawli, Meer Gunj - 243601	Central	Normal	6.20	2.70	8.90
35	Gangotri Khadi Gramodyog Mandal, Amroaha, Post Kakather, Dhanawa, Gujnwala-244235	Central	Normal	6.64	2.50	9.14
36	Shri Patel Sewa Ashram, Jasala, Shamli, Vill. Jasala - 247775	Central	Normal	6.56	2.50	9.06
37	Khadi Gramodyog Mandal, Rampur, Dhanyal, Tal Tanda - 244901	Central	Normal	6.74	2.50	9.24
38	Lok Sewa Ashram, Badaun - 243601	Central	Normal	6.64	2.90	9.54
39	Mahalaxmi Khadi Gramodyog Sansthan, Saharanpur, Bhainamau, Nakur - 247342	Central	Normal	6.64	3.40	10.04
40	Shri Narayan Bhatt Sewa Samiti, Badaun, Mudiya Dhuseki Kasganj, Nagar Panchayat - 202123	Central	Normal	6.74	3.20	9.94
41	Panchal Sewa Sansthan, Saharanpur, Dhenwa, Nakur - 247001	Central	Normal	6.64	3.30	9.94
42	Rashmi Khadi Gramodyog Sanstha, Saharanpur, Nakur - 247342	Central	Normal	6.41	3.30	9.71
43	Rudayan Gram Vikas Ashram, Sambal - 244302	Central	Normal	6.39	2.90	9.29
44	K.S.G.A., Aligarh, Banna Devi, Dist. Aligarh - 202001	Central	Normal	6.89	3.20	10.09
45	K.S.G.A., Saharanpur, Paper Mill Road - 247001	Central	Normal	6.70	3.20	9.90

46	K.S.G.A., Shikohabad, Firozabad - 283135	Central	Normal	6.95	3.35	10.30
47	Dhirendra Pradhan Gr. Seva Samity, Chandupura, Post Kharkhuda, Jilla Meerut - 245206	Central	Normal	6.85	3.30	10.15
48	Amba Gr. Seva Samity, Vill. Depha, Tal Dholana, Hapur - 245304	Central	Normal	6.85	2.53	9.38
49	Rashtriya Gr. Sansthan, I-B-438, Buddhi Vihar, Delhi Road, Moradabad - 244001	Central	Normal	6.85	3.30	10.15
50	Gramodyog Vikas Mandal, V. Kala Khera, Joya Amroha - 244222	Central	Normal	6.95	3.00	9.95
51	Bhavana Khadi Ashram, Bijnor, HO Mauzampur Jaitra, Dhampur - 246761	Central	Normal	5.90	2.80	8.70
52	Khadi Gr. Ashram, Bijnor, HO Mauzampur, Jaitra, Dhampur - 246761	Central	Normal	5.84	2.50	8.34
53	Shri Khadi Ashram Nindru, Bijnor, HO Ranibagh Colony, Dhampur - 246761	Central	Normal	6.34	2.70	9.04
54	Mahila Khadi Gr. Samiti, Bijnor, Vill. Sharifpur, Khauraj (Ganvadi), PO Nagina - 246762	Central	Normal	5.74	2.50	8.24
55	Janta Khadi Gr. Samiti, KD-115, Kavinagar, Gaziabad-201002	Central	Normal	6.71	2.90	9.61
56	Khadi Ashram, Tikamgarh	Central	Normal	6.00	2.10	8.10
57	Kambal Audyogik Utpadan Sahakari Samiti Ltd., Pidauth, Singhpur, Mau	Central	Normal	5.31	2.50	7.81
58	Audyogik Sansthan, Dharampur, Mau	Central	Normal	5.72	3.15	8.87
59	Bundelkhand Vikas Sansthan, Jhansi	Central	Normal	6.48	2.55	9.03
60	Samagra Lokhit Seva Ashram, Ghazipur	Central	Normal	5.93	2.80	8.73
61	Saghan Vikas Kshetra Samiti, Raniwa, Ambedkarnagar	Central	Normal	5.90	2.40	8.30
62	Khadi Kambal Udyog Sansthan, Andharipur, Ghazipur	Central	Normal	6.25	2.80	9.05
63	Mahadev Khadi Gramodyog Sansthan, Rauza, Ghazipur	Central	Normal	6.25	2.80	9.05
64	Kalpataru Seva Samiti, Barra, Kanpur	Central	Normal	6.05	2.20	8.25
65	Tarun Gramy Vikas Samiti, Kanpur	Central	Normal	5.88	2.45	8.33
66	Kshetriya Shri Gandhi Ashram, Pilibhit	Central	Normal	6.43	3.05	9.48
67	Kshetriya Shri Gandhi Ashram, Jhansi	Central	Normal	6.03	3.05	9.08
68	Resham Gramodyog Sadan, Umreli	Central	Normal	6.55	3.15	9.70
69	Mahila Hastshilp Sanstha, Kataghora	Central	Normal	6.60	2.25	8.85
70	Mahamaya Khadi Ashram, Amarkantak, Bilashpur	Central	Normal	6.68	2.25	8.93
71	Champa Khadi Gramodyog Mandal, Champa	Central	Normal	6.58	3.15	9.73
72	Gramin Vikas Pratisthan, Sasaholi	Central	Normal	6.88	3.15	10.03
73	Khadi Gramodyog Ashram, Chandauli	Central	Special	5.27	2.00	7.27
74	Shree Anand Gramodyog Samiti, Raipur, Dehradun	Central	Normal	6.82	2.05	8.87
75	Uttar Pradesh Gramodyog Samiti, Harrawala, Dehradun	Central	Normal	6.50	3.05	9.55
76	Bunkar Khadi Samiti, Udham Singh	Central	Normal	6.52	2.25	8.77

	Nagar, Jaspur					
77	Khadi Gramodyog Niketan, Mahuwa Dabra, Jaspur	Central	Normal	6.14	1.75	7.89
78	Gram Seva Mandal, Jagatpur, Allahabad	Central	Normal	6.25	2.90	9.15
79	Rangdhari Manav Vikas Sansthan, Jalalpurvi, Chandauli	Central	Special	5.37	2.00	7.37
80	Banvasi Seva Ashram, Govindpur, Sonbhadra	Central	Special	5.07	2.00	7.07
81	Sri Mahadev Smruti Mandir, Rauza,	Central	Normal	6.32	2.60	8.92
82	Khadi Gramodyog Vikas Sewa Niketan, Sathiyaon, Azamgarh	Central	Normal	4.00	1.30	5.30
83	Kshetriya Shri Gandhi Ashram, Bamoh, Damoh	Central	Normal	4.51	1.70	6.21
84	Gramodyog Mandal, Chhota Talab, Chhindwara	Central	Normal	4.03	1.70	5.73
85	Mahatma Gandhi Seva Ashram, Joura, Morena	Central	Normal	4.64	2.30	6.94
86	Shri Durga Khadi Evam Gramodyog Samiti, Saharanpur	Central	Normal	3.80	1.20	5.00
87	Gramin Mahila Utthan Samiti, Dholana, Pilkhuwa	Central	Normal	3.80	1.30	5.10
88	Dharam Khadi Gramodyog Sewa Sansthan, Shamli, Jasala, Shamli	Central	Normal	4.16	1.30	5.46
89	K S J High School, Ratanpur, Khurd, Dist. Sambhal	Central	Normal	4.16	1.20	5.36
90	Bhatona Gramodyog Sahakari Samiti Ltd., Bhatona, Dist. Bulandsahar	Central	Normal	4.16	1.30	5.46
91	Gramin Vikas Ashram, Majhuwara, Sultanpur	Central	Normal	3.80	1.76	5.56
92	Khadi Avam Gramodyog Vikas Samiti, Mehuwala Mafi, Raipur, Dehradun	Central	Normal	3.07	1.25	4.32
93	Kaushalya Gramin Vikas Avam Prashikshan, Indra Nagar, Dehradun	Central	Normal	3.07	1.25	4.32
94	Gramin Vikash Seva Sansthan, Goshandepur, Gaziabad	Central	Normal	4.32	1.25	5.57
95	Gram Kalyan Ashram, Ameda, B-87 Shrinagar Colony Paharia, Varanasi	Central	Normal	4.32	1.25	5.57
96	Adarsh Kambal Bunker Audhyogic Utpadan Sahakari Samiti, Mohanpurwa, Ghazipur	Central	Normal	4.32	1.25	5.57
97	Jay Prabha Khadi Gramodyog Pratishthan, Bansdih, Ballia	Central	Normal	4.32	1.25	5.57
98	Chaspara Silk Samity, Vill and PO Chaspara, Malda	East	Normal	4.92	3.40	8.32
99	Gandhi Gram Bikas Samity, Vill PO Mokdumpur, Dist. Malda-732103 (WB)	East	Normal	7.10	3.40	10.50
100	Gramin Kutir Shilpa Bhavan, Jiaganj, Murshidabad	East	Normal	5.00	3.40	8.40
101	Jhargram Khadi and VI Association, Paschim, Mednapur	East	Normal	6.90	3.40	10.30
102	Kshetriya Shree Gandhi Ashram, Jalalpur, Malda	East	Normal	6.70	3.40	10.10

	Sangha, Tq. Kandli, Vill. & PO Nagar, Dist. Murshidabad – 742159					
126	Mirzapur Resham Khadi Samity, Vill. & PO Mirzapur, Dist. Mursidabad, Tq. Mirzapur – 742227	East	Normal	7.10	2.93	10.03
127	Noor Resham Khadi Samity, Vill. & PO Choto Sujapur, Dist. Malda – 732206	East	Normal	6.15	2.93	9.08
128	The Chaspara Khadi Samity, Vill. & PO Chaspara, Tq. Kaliachak, Dist. Malda-732206	East	Normal	6.15	2.93	9.08
129	Memari Kutir Shilpa Prosikhan 'O' Utpadan Kendra, Vill. & PO Takipur, Tq. Bahadur, Dist. Burdwan (WB) - 713146	East	Normal	6.05	2.93	8.98
130	Gour Gramin Khadi and Silk Samiti, Vill. Uttar Mahadipur, Malda	East	Special	5.50	2.00	7.50
131	Margram Panchayat Silk Khadi Vander, Margram, West Bengal	East	Special	5.55	2.00	7.55
132	Adim Jati Samagra Vikash Parishad, Angara, Dist. Ranchi	East	Special	3.65	2.00	5.65
133	Raneshwar Samagra Vikash Parishad, Raneshwar, Dist. Dumka	East	Special	3.65	2.00	5.65
134	Adarsh Khadi Utpadak Sangh, Nuapatana, Cuttack	East	Normal	5.45	2.20	7.65
135	Nilachal Exportable Khadi & Gramodyog Sangh, Nuapatna, Cuttack	East	Normal	6.33	3.15	9.48
136	Gram Bikash Parishad, Nuapatna, Cuttack	East	Normal	5.98	2.80	8.78
137	Uttarpara Resham Khadi Gramodyog Sangha, Margram, Murshidabad	East	Normal	6.45	3.15	9.60
138	Dubrajpur Block Khadi Industrial Society, Tantipara, Birbhum	East	Normal	4.93	2.00	6.93
139	Sarvodaya Seva Sangh, Nagar, Murshidabad	East	Normal	6.00	2.15	8.15
140	Silk Khadi Organization, Berhampore, Murshidabad	East	Normal	5.75	1.85	7.60
141	Madan Mohan Silk Khadi Samiti, Maheshpur, Malda	East	Normal	6.35	2.45	8.80
142	Sujapur Resham Khadi Sangha, Brohmotter, Sujapur, Malda	East	Normal	6.45	2.65	9.10
143	Margram Resham Khadi Gramodyog Sangha, Margram, Murshidabad	East	Normal	6.10	2.15	8.25
144	Dwarka Tantipara Khadi Sanstha, Dwarka, Birbhum	East	Normal	4.93	2.00	6.93
145	Mohanpur Silk Khadi Unnayan Samiti, Chaspara, Malda	East	Normal	6.12	3.15	9.27
146	Murshidabad Resham Khadi Silpa Samiti, khagra, Murshidabad	East	Normal	6.30	1.75	8.05
147	Ramkrishna Resham Khadi & Palli Unnayan Sanstha, Margram, Murshidabad	East	Normal	5.60	1.75	7.35
148	Margram Khadi Seva Mandal, Margram, Birbhum	East	Normal	5.25	2.00	7.25
149	Lalitakunda Silk 'O' Khadi Gramodyog Bhavan, Lalitakunda, Birbhum	East	Normal	5.93	3.15	9.08

150	Gram Unnayan Khadi and Silk Samiti, Choto Sujapur, Malda	East	Normal	5.85	1.75	7.60
151	Gour Gramin Silk Unnayan Samiti, Chaspara, Malda	East	Normal	5.65	2.25	7.90
152	Gramin Khadi Kendra, Gayeshbari, Malda	East	Normal	6.25	2.25	8.50
153	Gayeshbari Khadi 'O' Gram Seva Sangha, Gayeshbari, Malda	East	Normal	5.61	3.15	8.76
154	Modern Resham Khadi Samiti, Piarapur, Sanmatinagar, Murshidabad	East	Normal	5.85	3.15	9.00
155	Jotekamal Mahila Khadi Seva Ashram, Jotekamal, Murshidabad	East	Normal	5.85	1.95	7.80
156	The Baluachara Khadi Gram Unnayan Samiti, Baluchari, Malda	East	Normal	6.30	2.55	8.85
157	Uttarbanga Khadi Pratisthan, Chhoto Sujapur, Malda	East	Normal	5.60	1.95	7.55
158	Akhtari Resham Silpa Khadi Samiti, Selimpur, Jalalpur, Malda	East	Normal	6.11	2.45	8.56
159	Bala Silk Khadi Unnayan Sanstha, Balakamalpur, Meherapur, Malda	East	Normal	5.50	2.65	8.15
160	Mothbari Khadi Samity, Mothabari, Malda	East	Normal	5.93	2.65	8.58
161	United Silk Khadi Samiti, Piarapur, Sanmatinagar, Murshidabad	East	Normal	5.57	2.45	8.02
162	Nalanda Zilla Khadi Gramodyog Sangh, Nalanda, Bihar	East	Normal	5.50	2.00	7.50
163	Makranda Bhandariso Gramodyog Sahyog Samiti Ltd., Dharbhanga	East	Normal	6.61	3.10	9.71
164	Resham Khadi Udyog Sangh, Bhagalpur, Bihar	East	Normal	5.68	2.95	8.63
165	Samastipur Anumandaliya Khadi Gramodyog Samiti, Samastipur, Bihar	East	Normal	6.98	3.15	10.13
166	Sarvodaya Ashram Asthawan, Nalanda, Bihar	East	Special	5.25	1.90	7.15
167	Gram Nirman Samiti, Katarpur, Nalanda, Bihar	East	Special	5.25	1.90	7.15
168	Gram Swaraj Sangh, Bariyarpur, Munger, Bihar	East	Special	5.25	1.90	7.15
169	Purbi Champaran Zilla Khasi Gramodyog Sangh, Motihari, Bihar	East	Normal	5.20	2.00	7.20
170	Gram Bharti (Sarvodaya Ashram), Simultala, Jamui, Bihar	East	Special	4.91	1.90	6.81
171	Babhua Anumandal Khadi Gramodyog Sangh, Babhua, Kaimur, Bihar	East	Special	5.25	1.90	7.15
172	Vanvasi Seva Kendra, Babhua, Kaimur, Bihar	East	Special	5.25	1.90	7.15
173	Saraikela Kharsawan Zilla Khadi Gramodyog Sangh, Adityapur, Jamshedpur, Jharkhand	East	Special	4.63	1.77	6.40
174	Hiranpur Littipada Samagra Gram Vikas Parishad, Hiranpur, Jharkhand	East	Special	5.18	2.00	7.18
175	Gadadhar Mishra Smarak Nidhi, Gandhigram, Godda, Jharkhand	East	Special	4.89	1.90	6.79
176	Shikaripara Samagra Vikas Parishad,	East	Special	5.60	2.00	7.60

	Shikaripara, Dumaka, Jharkhand					
177	Badlao Foundation, Mihijam, Jamtara, Jharkhand	East	Special	4.70	1.75	6.45
178	Khadi Gramodyog Sangh, Govindpur Road, Dhanvad, Jharkhand	East	Special	4.94	2.00	6.94
179	Lok Seva Kendra, Purana Chaibasa, West Singhbhum, Jharkhand	East	Special	5.30	2.00	7.30
180	Khadi Gramodyog Sangh, Singhbhoom, Bistupur, Jamshedpur, Jharkhand	East	Special	4.80	1.90	6.70
181	Kasturba Khadi Gramodyog Sanstha, Muri, Ranchi	East	Special	5.39	1.50	6.89
182	Ranchi Zila Vanvasi Khadi Gramodyog Vikas Sansthan, Ratu Road, Ranchi	East	Special	5.24	2.00	7.24
183	Mahadeo Smarak Khadi Gramodyog mandal, Hinoo, Jharkhand	East	Special	5.60	1.50	7.10
184	Nathnagar Gramodaya Sahyog Samiti Ltd., Nathnagar, Bhagalpur	East	Normal	4.09	1.60	5.69
185	Narsinghpur Khadi Kendrit Rachnatmak Samiti Ltd., Muzaffarpur	East	Special	3.20	1.53	4.73
186	Nabadwip Kutir Shipa Pratishthan. P.O. Nabadwip, Nadia	East	Normal	4.35	1.25	5.60
187	Alinagar Khadi Resham Shilpi Samity, Najirpur, Alinagar, Malda	East	Normal	4.08	1.25	5.33
188	Piarapur Resham Bayan Silpi Samabaya Samity Ltd. Piarapur, Murshidabad	East	Normal	4.22	1.25	5.47
189	Resham Khadi Gramonnayan Silpa Pratisthan, Palpara Ghoshhat, Katwa.	East	Normal	4.01	1.25	5.26
190	Kadamtala Khadi & Silk Reeling Centre, Jalalpur, Malda	East	Normal	4.23	1.75	5.98
191	Murshidabad Silk Weavers Co-operative Society Ltd. Chak, islampur	East	Normal	4.23	1.25	5.48
192	Gohira Resham Khadi "O" Gramodyog Samity, Gohira, Gurulla, Murshidabad	East	Normal	4.18	1.25	5.43
193	Khadi Vikash Kendra, Tantipara, Birbhum	East	Special	3.84	1.20	5.04
194	Muzaffar Zilla Khadi Gramodyog Sangh, Sarvodaya Gram	East	Normal	3.25	1.95	5.20
195	Habibullah Gramin Vikash Khadi & Gramodyog Sangh, Beraghat, Madhubani	East	Normal	3.25	1.65	4.90
196	Adarsh Mahila Vikas Sahayog Samity Ltd. Jadishpur, Bhagalpur	East	Special	3.13	1.25	4.38
197	Rosera Anumandaliya Gramodyog Vikas Mandal, Rosera, Samastipur	East	Special	3.25	1.25	4.50
198	Khadi Shilpa Niketan Darima, Jumai	East	Special	3.25	1.40	4.65
199	Vikas Samiti, Parabhawati Gram, Jamui	East	Special	3.25	1.25	4.50
200	Bihar Udyog Mandal, Bihar Sharif, Nalanda	East	Special	3.25	1.25	4.50
201	Tantipara Tassar Resham Shilpi Sambhav Samiti Ltd.	East	Normal	3.83	1.25	5.08
202	Khadi Gramodyog Sangh (Narar),Mirzapur,Kurukshetra	North	Normal	6.03	1.98	8.00

203	Jaiselmer Jilla Khadi Gramodyog Parishad, Jaisalmer,	North	Normal	5.15	1.99	7.14
204	Nagour Jilla Khadi Gramodyog Sangh, Nagour,	North	Normal	5.86	2.45	8.31
205	Shekhawati Khadi Gramodyog Sangh, Jhunjhunu,	North	Normal	5.73	2.45	8.18
206	Khadi Gramodyog Seva Sadan, Gurgaon (Haryana)	North	Normal	7.01	3.40	10.41
207	Hadoti Khadi Gramodyog Samiti, Kota	North	Normal	5.75	3.08	8.83
208	Shri Gandhi Seva Sadan, Bayana, Bharatpur-321401	North	Normal	6.73	3.01	9.74
209	Ajmer Merawara Gram Seva Mandal, Ajmer	North	Normal	5.75	3.08	8.83
210	Lok Sewa Samiti, Nagar, Bharatpur-321205 (Raj)	North	Normal	5.90	3.00	8.90
211	Khadi Gramodyog Vikas Samiti, Nadbai, Bharatpur-321602 (Raj)	North	Normal	5.69	2.00	7.69
212	Nav Nirman Sangh, Udaypur-313001 (Raj)	North	Normal	5.24	3.32	8.56
213	Khamor Khadi Gramodyog Ut. S.S. Ltd., Shahpura, Bhilwara-311404 (Raj)	North	Normal	5.08	2.90	7.98
214	The Puja Khadi Gramodyog Samiti, Haryana	North	Normal	7.00	3.40	10.40
215	Khadi Udyog Jathlana, Manglai, Haryana	North	Normal	7.06	3.40	10.46
216	Saraswati Khadi Gramodyog Sangh, Haryana	North	Normal	7.00	3.40	10.40
217	Rashtriya Khadi Gramodyog Samiti, Kesri, Ambala	North	Normal	4.91	3.15	8.06
218	Amrit Khadi Gramodyog Samiti, Nagala Jattan, Ambala	North	Normal	4.91	3.15	8.06
219	Mahila Gramodyog Mandal, Chunna Chowk, Ambala	North	Normal	5.74	3.15	8.89
220	Chirag Arya Khadi Gramodyog Mandal, Panchkula	North	Normal	5.74	3.15	8.89
221	Shri Gandhi Khadi Gramodyog Sadan, Ripuddaman, Patiala	North	Normal	5.80	3.40	9.20
222	Majitha Khadi Gramodyog Mandal, Majitha, Amritsar	North	Special	5.45	2.00	7.45
223	Udyog Mandir, Amer, Jaipur, Rajasthan	North	Normal	4.68	3.05	7.73
224	Kshetriya Khadi Gramodyog Samiti, Lalsot, Dausa, Rajasthan	North	Normal	6.39	3.15	9.54
225	Gram Seva Mandal, Karnal	North	Normal	7.05	3.40	10.45
226	Amit Khadi Gramodyog Samiti, Karnal, Haryana	North	Normal	7.05	3.40	10.45
227	Mahila Khadi Niketan, Bhivani Road, Jind, Haryana	North	Normal	5.83	3.15	8.98
228	Khadi Sewa Mandal, Ramnagar, Karnal, Haryana	North	Normal	5.00	3.15	8.15
229	Yara Khadi Gramodyog Sangh, Nilokheri, Karnal, Haryana	North	Normal	7.05	3.40	10.45
230	Sohana Khadi Gramodyog Mandal, Sohana, Gurgaon	North	Normal	5.74	3.15	8.89

231	Bharatiya Khadi Gram Seva Ashram, Khanpur, Ambala	North	Normal	5.74	2.75	8.49
232	Uni Khadi Gramodyog Sansthan, Ranibazar, Bikaner	North	Normal	5.09	2.25	7.34
233	Khadi Gramodyog Vikas Samiti, Dungargar, Bikaner	North	Normal	4.35	2.30	6.65
234	Shankar Gramodyog, Hariur Tangri, Kuldeep Nagar, Ambala	North	Normal	3.78	1.30	5.08
235	Raipura Khadi Gramodyog Mandal, Ajmer Basti, Jind	North	Normal	4.15	1.80	5.95
236	Kissan Khadi Gramodyog Samiti, Kabri, Panipat	North	Normal	4.15	1.80	5.95
237	Khadi Gramodyog Sangh, Chowki No.2, Kurukshetra	North	Normal	4.08	2.30	6.38
238	Khadi Seva Sangh, Jalandhar	North	Special	2.97	1.20	4.17
239	Kshetriya Punjab Khadi Mandal, Sujapur	North	Special	2.97	1.20	4.17
240	Gyandeeep Mahila Welfare Society, Vill. Bhagatpur, Gurudaspur	North	Special	3.18	1.20	4.38
241	Arnai Khadi Mandir Samiti, Bhawani Khera, Kurukshetra	North	Normal	4.08	2.30	6.38
242	Himachal Khadi Ashram, Lakkar Bazar, Shimla	North	Special	3.70	1.30	5.00
243	Shivalik Khadi Ashram, VPO Santokhgarh, Unna	North	Special	3.70	1.30	5.00
244	Pragatisheel Khadi Gramodyog Samiti, Mandi	North	Special	3.10	1.30	4.40
245	Himachal Khadi Mandal, Akhara Bazar, Kullu	North	Special	3.70	1.30	5.00
246	Khadi Gramodyog Samiti, Nerwa, Chopal, Dist. Shimla	North	Special	3.70	1.30	5.00
247	Shree Sidh Baba Laxman Jati Ji Khadi Gramodyog Vikas Samiti, Dholag, Bilaspur	North	Special	3.50	1.20	4.70
248	Khadi Gramodyog Sansthan, Nagrota, Bagwan	North	Special	3.90	1.40	5.30
249	Banswara Zilla Seva Sangh, Pratappur, Gandhi Bhawan, Banswara	North	Normal	4.10	1.30	5.40
250	Tamulpur Anchalik Gramdan Sangh, Tmulpur, Kuwarikata, Baksa-781360	North-East	Normal	4.65	3.58	8.23
251	Khiljit Muga and Khadi Industrial Production Centre, Imphal	North-East	Special	5.27	1.75	7.02
252	Philanthropic Society, Imphal	North-East	Special	5.60	1.75	7.35
253	Nirmal Khadi and Village Industries Association, Imphal	North-East	Special	5.27	1.75	7.02
254	Southern Manipur Development Organization, Imphal	North-East	Special	5.50	1.75	7.25
255	A P Seva Sangh, Doimukh	North-East	Special	3.21	1.30	4.51
256	Paham Khadi Gram Udyog Sangha, Paham, West Garo Hills, Mrghalaya	North-East	Special	3.05	0.80	3.85
257	Belgaum Dist. Khadi Gramodyog	South	Normal	6.35	3.40	9.75

	Sangh,6, S.P.M. Road,Belgaum					
258	Dharwad Dist. Khadi Gramodyog Sangh,Bengeri Post,Hubli - 580023	South	Normal	5.00	3.40	8.40
259	Dharwad Taluka Garag Kshetriya Seva Sangh,Dharwad-580001,Karnataka	South	Normal	4.19	2.30	6.49
260	Annur Sarvodaya Sangh,7/34, Nehru Street,Annur, Coimbatore	South	Normal	7.10	3.40	10.50
261	Karur Sarvodaya Sangh,14, Vaiyapur Nagar,Karur	South	Normal	5.10	3.40	8.50
262	Mulanur Sarvodaya Sangh,Mulanur,Tamilnadu	South	Normal	7.10	3.40	10.50
263	Tamilnadu Sarvodaya Sangh,Gandhinagar,Tirupur	South	Normal	7.10	3.40	10.50
264	Thanjavur West Sarvodaya Sangh,28 Giri Road, Srinivasapuram,Thanjavur	South	Normal	6.60	3.40	10.00
265	G.S.G.S. Kendram,N Paryoor,,Ernakulam-683513	South	Normal	7.10	3.40	10.50
266	Kerala Khadi and VI Federation,Edappally,,Ernakulam - 682024	South	Normal	7.10	3.40	10.50
267	Kerala Sarvodaya Sangh,Kozhikode-673020,Kerala	South	Normal	6.94	3.40	10.34
268	S J N K Sangham,Srikakulam-532001,AP	South	Normal	7.01	3.40	10.41
269	Swarajya Sangham,Kotananduru,Post Tuni-533401	South	Normal	7.00	3.40	10.40
270	Erode Sarvodaya Sangh,Muthampalayam Housing Unit, Kasipalayam,Erod-638 009	South	Normal	6.72	3.28	10.00
271	Gandhipuram Sarvodaya Sangh,7th Street, Cross Cut Road,Gandhipuram, Coimbatore-641 012	South	Normal	6.93	3.28	10.20
272	Kethanur Sarvodaya Sangh,2/6 Main Road, PO-Kethanur, Tq- Palladam,Tirupur-641 671, Dist. Coimbatore	South	Normal	5.33	2.38	7.71
273	Koduvai Sarvodaya Sangh,Vinobha Nagar, Koduvai, ,Trupur-638 660	South	Normal	4.93	3.28	8.20
274	Padiyur Sarvodaya Sangh,Padiyur, Kangayam,Tirupur-638 701	South	Normal	3.28	2.88	6.16
275	Pollachi Sarvodaya Sangh,Vill. Rangasamudrum, PO. Sulleswarnpatty, Anamalai Road36 Venkataramana Street,Pollachi-642 001	South	Normal	4.49	3.28	7.77
276	Thanjavur Sarvodaya Sangh,8,9 K. V. Kovil Street, Kumbakonam,Thanjavur-612 001	South	Normal	5.70	3.50	9.20
277	Thirupattur Sarvodaya Sangh,87 Gandhi Road, ,Thirupattur-635 601, Dist. Vellore	South	Normal	4.99	3.28	8.27
278	Tirupur Sarvodaya Sangh,Murugampalayam, PO. Iduvampalayam,Tiruppur-641 687	South	Normal	3.78	1.88	5.66
279	Udamalpet Sarvodaya Sangh,6-A,	South	Normal	4.69	3.28	7.97

	Appavu Street, Udumalpet, Tiruppur-642 126					
280	Uttukuli Sarvodaya Sangh, Kangayam Road, Uthukuli R. S., Tiruppur-638 752	South	Normal	3.42	3.28	6.70
281	Khadi Gramodyog Sangh, Benganapally, Dist. Kurnool	South	Special	2.90	2.00	4.90
282	Sri Sai Silk Khadi Gramodyog Seva Sangh, Rappthadu, Dist. Anantapur	South	Special	3.40	2.00	5.40
283	Grama Prarishramala Sanghamu, Dharmavaram, Dist. Anantapur	South	Special	3.37	2.00	5.37
284	Garladinne Gramodayog Khadi Silk Seva Sangham, Dharmavaram, Dist. Anantapur	South	Special	3.14	2.00	5.14
285	Sri Lakshmi Narasimha Swamy Khadi Silk Twisting & Weaving Coop. Society Ltd., C. K. Pally, Dist. Anantapur	South	Special	3.40	1.50	4.90
286	Rayalaseema Grameena Vikasa Mandali, Chittari Veedhi, Dist. Kurnool	South	Special	5.60	2.00	7.60
287	Kurnool Zilla Gramaparisramala Sangham, Vill. Kondapeta, Dist. Kurnool	South	Special	5.60	2.00	7.60
288	Seva Mandir, Hindupur, Vill Kodigenahalli, Dist. Anantapur	South	Special	5.57	2.00	7.57
289	Gandhigram Khadi & VIPC Trust, Gandhigram, Tq. Authoor, Dindigul-624 302	South	Normal	4.65	2.63	7.28
290	Madurai West Sarvodaya Sangh, 403/10 Usilampatti Road, Tq. Tirumangalam, Madurai-625 706	South	Normal	4.75	1.63	6.37
291	Nanguneri Sarvodaya Sangh, Panagudi, Tq. Radhapuram, Tirunelveli-627 109	South	Normal	4.60	1.63	6.23
292	Sankarankoil Sarvodaya Sangh, Shankarankovil, Tirunelveli-627 756	South	Normal	5.98	3.78	9.25
293	Tiruchendur Sarvodaya Sangh, Paraman Kuruchi Rd., Truchendur, Tuticorin-628 215	South	Normal	4.49	2.31	6.80
294	Tuticorin Sarvodaya Sangh, KVK Nagar, Tuticorin-628 008	South	Normal	4.23	2.14	6.37
295	Kerala Gandhi Smaraka Nidhi, Thycaud, Thiruvananthapuram-695 014	South	Normal	6.10	3.58	9.68
296	Palakkad Sarvodaya Sangh, Ottapalam, P. B no.101, Palakkad-679 101	South	Normal	2.91	3.58	6.49
297	Trivandrum Sarvodaya Sangh, Ooruttukala, Neyyattinkara, Thiruvananthapuram-695 121	South	Normal	1.84	2.33	4.17
298	Swarajya Sangh, Krishnapuram, D. No. 64, Pattusali Street, Payakavaopeta, Vishakhapatnam-531 126	South	Normal	6.58	3.18	9.75
299	Coimbatore North Sarvodaya Sangh, Coimbatore	South	Normal	7.10	3.40	10.50

300	Rural Development Association, Weaver Colony, Bangalore, Banner Ghatta, Dist. Bangalore-560083	South	Normal	6.08	3.20	9.28
301	Grama Swarajya Sangham, Gooty, Tadipatri, Anantapur -515411	South	Special	5.60	2.00	7.60
302	Sri Rajeshwari Khadi Seva Samiti, Maddikera, Pattikonda, Kurnool Dist.-518385	South	Special	5.60	2.00	7.60
303	Sri Maruthi Khadi Silk RTW ICS Ltd., Kakkalapally, Anantapuram Dist-515002	South	Special	5.13	2.00	7.13
304	Kodiginehalli Kumbly Cotton and Silk Weavers Coop Product and Sales Society Ltd., Kodigenahalli, Hindupur, Anantapuram Dist.-515212	South	Special	5.15	2.00	7.15
305	Gandhi Khadi V.I. Production & Sales, ICS Ltd. Nellimarla	South	Special	5.60	2.00	7.60
306	Swarajya Sangh, Vemulapudi, Narsipatnam, Visakhapatnam	South	Special	5.25	1.80	7.05
307	Suryodaya Khadi Gramodyog Rural Development Society, Mandyampalli	South	Normal	6.18	3.15	9.33
308	Sri Vinayaka Silk Industrial Association, Khadi Emporium, Gandhi Bhavan Building, V V Road, Mandya Karnataka	South	Normal	6.56	3.15	9.71
309	Kanakadasa Kuri Sangopan Mattu Unney Utpadak Sahakari Sangh Ltd., Belagavi, Sindolli, Karnataka	South	Normal	6.55	3.15	9.70
310	TNR Silk Khadi Industries Kariyappalli, Kagathi Post, Chintamani Tq, Chikkaballapur-563125	South	Normal	6.48	3.15	9.63
311	Babita Khadi Gramodyog Sangha, Melur Post, Shidlaghatta, Chikaballapur	South	Normal	6.60	3.15	9.75
312	Indian Khadi Export Development Association, Doddadasarahalli, Sidlaghatta, Chikkaballapur	South	Normal	6.20	2.20	8.40
313	Chitradurga Sarvodaya Khadi Gramodyog Sangh, Jagaluri	South	Normal	4.09	3.15	7.24
314	Astadevatha Khadi Gramodyog Sangh, Chatrakodihalli, Kolar	South	Normal	6.15	3.15	9.30
315	Sri Raghavendraswamy Khadi Gramodyog Sangh, Ammanallur, Kolar-563128	South	Normal	6.53	3.15	9.68
316	Bharathi Gramodyoga Sangh, Murugamalla, Chintamani, Chikkaballapur-563125	South	Normal	6.09	3.15	9.24
317	Shreenivasa Khadi Industrial Association, Ram Mohanpura, Bangalore-560021	South	Normal	6.37	3.15	9.52
318	Seema Resham Khadi Industrialists Association, No. 35, 3rd Main, Kasturba Nagar, Mysore Road, Bangalore-26	South	Normal	6.21	3.15	9.36
319	Khadi Gramodyog Sangh, Halepalya, Tiptur, Tumkur-572202	South	Normal	6.11	3.15	9.26
320	Chitradurga Dist. Khadi Coop. Society,	South	Normal	3.80	3.40	7.20

	Chitradurga-577501					
321	Shri Bhartambe Mahila Khadi and Gramodyog Kaigarika Sangh, Shiramagondanahalli, Davanagere-577005	South	Normal	6.35	3.30	9.65
322	Nazeen Silk Association Upperpet, Chintamani, Chikkaballapur-563125	South	Normal	6.24	3.15	9.39
323	Sri Allamprabhu Gramodyog Mattu Shikshan Samsthe, Terdal	South	Normal	6.48	2.25	8.73
324	Dharwad Taluka Seva Sangh, Dharwad	South	Normal	4.95	3.15	8.10
325	Aland Khadi Gramodyogt Sangh, Aland, Gulbarga	South	Normal	5.95	3.15	9.10
326	Khadi & Gramodyog Sahakara Sangha Ltd., Holenarasipur, Hassan	South	Normal	6.40	3.15	9.55
327	Sri Laxmi Khadi Gramodyog Kaigarika Sangha, Burujinahatti	South	Normal	6.29	2.25	8.54
328	Davangere Charakha and Gramodyog Sahakara Sangha Ltd., Davangere	South	Normal	6.30	3.15	9.45
329	Akkanagamma Khadi Gramodyog Kaigarika Mahila Mandali, Davangere	South	Normal	6.10	3.15	9.25
330	Tiruchirapalli North Sarvodaya Sangh, No. 21 Pidari Koil Street, Tiruchirapalli-620002	South	Normal	4.93	3.40	8.33
331	Arni Sarvodaya Sangh, Arni	South	Normal	4.25	2.05	6.30
332	Coimbatore South Sarvodaya Sangh	South	Normal	6.08	2.25	8.33
333	Cuddalore Sarvodaya Sangh, Vadalur	South	Normal	3.98	1.05	5.03
334	M Kumarapalayam Sarvodya Sangh, Mulanur	South	Normal	6.28	2.00	8.28
335	North Arcot Sarvodaya Sangh, Vellore	South	Normal	3.11	3.15	6.26
336	Chingaleput Dist. Sarvodaya Sangh, Kancheepuram	South	Normal	5.04	2.00	7.04
337	Bapuji Khadi Silk Swarajya Seva Sangham, Somandepalli, Ananthapur	South	Special	4.78	2.00	6.78
338	Periyakulam Sarvodaya Sangh, 17-A Cumbum Road, Periyakulam-625601, Dist. Theni	South	Normal	5.50	3.40	8.90
339	Aruppukottai Sarvodaya Sangh, 95, Pandalgudi Road, Aruppukottai-626101, Dist. Virudhunagar	South	Normal	6.90	3.40	10.30
340	Virudhunagar Sarvodaya Sangh, 329 Railway Feeder Road, Dist. Virudhunagar-626001	South	Normal	6.58	3.40	9.98
341	Kanyakumari Dist. Sarvodaya Sangh, Kottar, Nagercoil, Dist. Kanyakumari - 629002	South	Normal	5.98	3.40	9.38
342	Bhagyanagar Khadi Samiti, Saroornagar, Roshan Bagh, Hyderabad	South	Special	2.58	1.90	4.48
343	Gadwal Taluka Khadi Gramodyog Sangh, Gadwal, Dist. Mahaboobnagar, Telangana	South	Special	3.40	1.00	4.40
344	Sri Beeralingeswara Khadi Rural Development Association, Yennumaladoddi (AP)	South	Special	5.19	1.75	6.94

345	Gramodyog Khadi Silk Society, Ananthapur, AP	South	Special	5.13	1.75	6.88
346	Manikanta Khadi and Silk Development Society, Ananthapur	South	Special	5.08	1.75	6.83
347	Sri Kanaka Dasa Khadi Rural Development Association, Rudrampalli, AP	South	Special	5.19	1.75	6.94
348	Sri Venkateshwara Khadi Rural Development Association, Rudrampalli, AP	South	Special	5.14	1.75	6.89
349	Sri Rama Khadi Rural Development Association, Ontareddypalli AP	South	Special	5.14	1.75	6.89
350	Sri Mylaralingeswara Khadi Rural Development Association, Mahanthpuram, AP	South	Special	5.14	1.75	6.89
351	Bellary Dist. Khadi Gr. Sangh, Ittagi	South	Normal	3.40	1.30	4.70
352	Sri Ranga Khadi. Gr. Sangh, Hosadurga	South	Normal	3.30	1.30	4.60
353	Khadi Nekkar Sha. Utp. Sangh, Uppinbetegeri	South	Normal	3.95	1.30	5.25
354	Cannanore Sarvodaya Sangh, Cannanore	South	Normal	4.70	2.30	7.00
355	Kurubar Kuri Unneya Audyogika Bal.Sha.Sangh Niyamiti, Ranebenur	South	Normal	4.10	1.30	5.40
356	Khadi Workers Co-operative Society, Ron	South	Normal	4.00	1.80	5.80
357	Khadi Gramodyog Sangh, Bidar	South	Normal	4.35	1.80	6.15
358	Jam Khandi Tq. Khandi Gramodyog Sangh, Jam Khandi, Dist Bagalkot 587311	South	Normal	4.15	1.60	5.75
359	Bellary Ambar Charkha Kushala Karigar Sahakari Sangha, Bellary	South	Normal	3.80	1.80	5.60
360	Sri Nidhi Khadi & V.I. Association, Surabone, Davangere	South	Normal	3.80	1.30	5.10
361	Sri Venkateshwara Khadi Gramodyog Sangh, Garudanahalli, Kolar	South	Normal	3.20	1.30	4.50
362	Swarajya Sangh, Tuni	South	Normal	4.15	1.80	5.95
363	Nilgiri Dist. Sarvodaya Sangh, Post Udhagamandalam, Nilgiri-643001, Ooty	South	Normal	3.88	1.25	5.13
364	KGN Silk Khadi Gramodyog Sangh, Kondarajanahalli, Kolar	South	Normal	4.33	1.20	5.53
365	Laxmeshwar Bhagada Kuri Sangopana Hagu Unneya Audyogika Sahakari Sangh, Niyamit, Laxmeshwar, Gadag Dist.	South	Normal	4.27	1.15	5.42
366	Tazeen Silk Khadi and Village Industries Association, Kolar	South	Normal	4.33	1.20	5.53
367	The Ron Taluka Kuri Sangopana Mattu Unney Belavanigaya Sahakara Sangh Ltd., Malluapur, Gadag Dist.	South	Normal	4.03	1.15	5.18
368	Khadi Silk Industrial Association, Channasandra, Kolar Dist.	South	Normal	4.18	1.20	5.38
369	Udyog Bharati,Gondal,Rajkot	West	Normal	6.00	3.00	9.00

398	Jay Hind Khadi Gramodyog Sangh, Palanpur (Gujarat)	West	Special	5.15	2.00	7.15
399	Nav Jivan Khadi Gramodyog Sangh, Palanpur (Gujarat)	West	Special	5.20	2.00	7.20
400	Paschim Kutch Khadi Gramodyog Sangh, Kutch (Gujarat)	West	Special	5.30	2.00	7.30
	TOTAL			2145.28	948.36	3093.34

Annexure 2: List of KIs as per phases of DRA funding

For the purpose of this evaluation DRA funding to the 400 KIs has been segregated into two phase. 87 KIs received the funding in Phase 1 from 2013- 2016 and 313 KIs that received the funding in 2017. Detailed list of these KIs is provided in the table below:

S.No	Phase of funding	Name of the KI	State/Divisional Office	Zone
1	1	Udyog Bharati,Gondal,Rajkot	Ahmedabad	West
2	1	Khadi Gramodyog Sangh (Narar),Mirzapur,Kurukshetra	Ambala Cantt	North
3	1	Belgaum Dist. Khadi Gramodyog Sangh,6, S.P.M. Road,Belgaum	Bangalore	South
4	1	Dharwad Dist. Khadi Gramodyog Sangh,Bengeri Post,Hubli - 580023	Bangalore	South
5	1	Dharwad Taluka Garag Kshetriya Seva Sangh,Dharwad-580001,Karnataka	Bangalore	South
6	1	Madhya Bharat Khadi Sangh,Po Jiwajiganj,Gwalior	Bhopal	Central
7	1	Jaiselmer Jilla Khadi Gramodyog Parishad,Jaisalmer,	Bikaner	North
8	1	Nagour Jilla Khadi Gramodyog Sangh,Nagour,	Bikaner	North
9	1	Shekhawati Khadi Gramodyog Sangh,Jhunjhunu,	Bikaner	North
10	1	Annur Sarvodaya Sangh,7/34, Nehru Street,Annur, Coimbatore	Chennai	South
11	1	Karur Sarvodaya Sangh,14, Vaiyapur Nagar,Karur	Chennai	South
12	1	Mulanur Sarvodaya Sangh,Mulanur,Tamilnadu	Chennai	South
13	1	Tamilnadu Sarvodaya Sangh,Gandhinagar,Tirupur	Chennai	South
14	1	Thanjavur West Sarvodaya Sangh,28 Giri Road, Srinivasapuram,Thanjavur	Chennai	South
15	1	Parvatiya Gram Swaraj Mandal,Kunj PO Jayanti,Almora	Dehradun	Central
16	1	Pragatipath Laghu Utpadak Samiti,Mol Natha Singh,Jaspur	Dehradun	Central
17	1	Kshetriya Shri Gandhi Ashram,Subhash Nagar,Gonda	Gorakhpur	Central
18	1	Chaspara Silk Samity,Vill and PO Chaspara,Malda	Kolkata	East
19	1	Gandhi Gram Bikas Samity,Vill PO Mokdumpur,Dist. Malda-732103 (WB)	Kolkata	East
20	1	Gramin Kutir Shilpa Bhavan,Jiaganj,Murshidabad	Kolkata	East
21	1	Jhargram Khadi and VI Association,Paschim ,Mednapur	Kolkata	East
22	1	Kshetriya Shree Gandhi Ashram,Jalalpur,Malda	Kolkata	East
23	1	Palli Unnayan Sansthan,Kaladanga,Murshidabad	Kolkata	East
24	1	Satish Sarvodaya Bharati,137, B. B. Sen Road,Berhampur, Murshidabad	Kolkata	East
25	1	Bhuraj Seva Sansthan,Mohaliya Shivpar,Hardoi	Lucknow	Central
26	1	Gramin Vikas Ashram,Naipalpur,Sitapur	Lucknow	Central

S.No	Phase of funding	Name of the KI	State/Divisional Office	Zone
27	1	Kshetriya Shri Gandhi Ashram,Naipalpur, Khairabad,Sitapur - 261001	Lucknow	Central
28	1	Vinoba Gramodyog Vikas Sansthan,Kaushal Bhavan Po,Wanda	Lucknow	Central
29	1	Nag Vidharbha Charkha Sangh,Mul,Dist. Chandrapur	Nagpur	West
30	1	Gopal Ganj Zilla Khadi Gramodyog Sangh,Arar Mode,Gopalganj	Patna	East
31	1	G.S.G.S. Kendram,N Paryoor,,Ernakulam-683513	Trivandrum	South
32	1	Kerala Khadi and VI Federation,Edappally,,Ernakulam -682024	Trivandrum	South
33	1	Kerala Sarvodaya Sangh,Kozhikode-673020,Kerala	Trivandrum	South
34	1	S J N K Sangham,Srikakulam-532001,AP	Vishakhapatnam	South
35	1	Swarajya Sangham,Kotananduru,Post Tuni-533401	Vishakhapatnam	South
36	1	Bhimani Khadi Gramodyog Sangh, Kutch (Gujarat)	Ahmedabad	West
37	1	Jay Hind Khadi Gramodyog Sangh, Palanpur (Gujarat)	Ahmedabad	West
38	1	Nav Jivan Khadi Gramodyog Sangh, Palanpur (Gujarat)	Ahmedabad	West
39	1	Paschim Kutch Khadi Gramodyog Sangh, Kutch (Gujarat)	Ahmedabad	West
40	1	Khadi Gramodyog Seva Sadan, Gurgaon (Haryana)	Ambala Cantt	North
41	1	Erode Sarvodaya Sangh,Muthampalayam Housing Unit, Kasipalayam,Erod-638 009	Chennai	South
42	1	Gandhipuram Sarvodaya Sangh,7th Street, Cross Cut Road,Gandhipuram, Coimbatore-641 012	Chennai	South
43	1	Kethanur Sarvodaya Sangh,2/6 Main Road, PO-Kethanur, Tq-Palladam,Tirupur-641 671, Dist. Coimbatore	Chennai	South
44	1	Koduvai Sarvodaya Sangh,Vinobha Nagar, Koduvai, ,Trupur-638 660	Chennai	South
45	1	Padiyur Sarvodaya Sangh,Padiyur, Kangayam,Tirupur-638 701	Chennai	South
46	1	Pollachi Sarvodaya Sangh,Vill. Rangasamudrum, PO. Sulleswarnpatty, Anamalai Road36 Venkataramana Street,Pollachi-642 001	Chennai	South
47	1	Thanjavur Sarvodaya Sangh,8,9 K. V. Kovil Street, Kumbakonam,Thanjavur-612 001	Chennai	South
48	1	Thirupattur Sarvodaya Sangh,87 Gandhi Road, ,Thirupattur-635 601, Dist. Vellore	Chennai	South
49	1	Tirupur Sarvodaya Sangh,Murugampalayam, PO. Iduvampalayam,Tiruppur-641 687	Chennai	South
50	1	Udamalpet Sarvodaya Sangh,6-A, Appavu Street, Udumalpet,Tiruppur-642 126	Chennai	South
51	1	Uttukuli Sarvodaya Sangh,Kangayam Road, Uthukuli R. S.,Tiruppur-638 752	Chennai	South
52	1	Tamulpur Anchalik Gramdan Sangh,Tmulpur, Kuwarikata ,Baksa-781 360	Guwahati	North-East
53	1	Khadi Gramodyog Sangh, Benganapally, Dist. Kurnool	Hyderabad	South

S.No	Phase of funding	Name of the KI	State/Divisional Office	Zone
54	1	Sri Sai Silk Khadi Gramodyog Seva Sangh, Rappthadu, Dist. Anantapur	Hyderabad	South
55	1	Grama Prarishramala Sanghamu, Dharmavaram, Dist. Anantapur	Hyderabad	South
56	1	Garladinne Gramodayog Khadi Silk Seva Sangham, Dharmavaram, Dist. Anantapur	Hyderabad	South
57	1	Sri Lakshmi Narasimha Swamy Khadi Silk Twisting & Weaving Coop. Society Ltd., C. K. Pally, Dist. Anantapur	Hyderabad	South
58	1	Rayalaseema Grameena Vikasa Mandali, Chittari Veedhi, Dist. Kurnool	Hyderabad	South
59	1	Kurnool Zilla Gramaparisramala Sangham, Vill. Kondapeta, Dist. Kurnool	Hyderabad	South
60	1	Seva Mandir, Hindupur, Vill Kodigenahalli, Dist. Anantapur	Hyderabad	South
61	1	Hadoti Khadi Gramodyog Samiti, Kota	Jaipur	North
62	1	Shri Gandhi Seva Sadan, Bayana, Bharatpur-321401	Jaipur	North
63	1	Ajmer Merawara Gram Seva Mandal, Ajmer	Jaipur	North
64	1	Baswa Resham Shilpi Samabaya Sangha Ltd.(KVIB),PO. Baswa, Rampurhat,Birbhum-731 202	Kolkata	East
65	1	Das Silk Khadi Samiti (KVIB),Vill. Piarapur, Tq. Ragunathgonj,Malda-732 206	Kolkata	East
66	1	Jaluabadal Khadi 'O' Resham Shilpa Samity,J B Malik Parada, Tq. Kaliachak-I,Malda-732 216	Kolkata	East
67	1	Nagar Resham Shilpa Samabaya Samiti Ltd.,Nagar,Murshidabad-742 159	Kolkata	East
68	1	Nataraj Khadi Shilpa Samity,Vill. Chotonilpur, PO Sripally,Dist. Burdwan-713 103 (West Bengal)	Kolkata	East
69	1	Resham Khadi 'O' Kutir Shilpa Samiti,Chota Sujapur, Tq. Sujapur Gram Panchayat,Malda-732 206	Kolkata	East
70	1	Resham Kutir Shilpa,Vill & Post Bamongram,,Malda-732 206	Kolkata	East
71	1	Gandhigram Khadi & VIPC Trust,Gandhigram, Tq. Authoor ,Dindigul-624 302	Madurai	South
72	1	Madurai West Sarvodaya Sangh,403/10 Usilampatti Road, Tq. Tirumangalam, ,Madurai-625 706	Madurai	South
73	1	Nanguneri Sarvodaya Sangh,Panagudi, Tq. Radhapuram , Tirunelveli-627 109	Madurai	South
74	1	Sankarankoil Sarvodaya Sangh,Shankarankovil, ,Tirunelveli-627 756	Madurai	South
75	1	Tiruchendur Sarvodaya Sangh,Paraman Kuruchi Rd.,Truchendur,Tuticorin-628 215	Madurai	South
76	1	Tuticorin Sarvodaya Sangh,KVK Nagar, ,Tuticorin-628 008	Madurai	South
77	1	Kerala Gandhi Smaraka Nidhi,Thycaud,,Thiruvananthapuram-695 014	Trivandrum	South
78	1	Palakkad Sarvodaya Sangh,Ottapalam, P. B no.101,Palakkad-679 101	Trivandrum	South
79	1	Trivandrum Sarvodaya Sangh,Ooruttukala, Neyyattinkara,Thiruvananthapuram-695 121	Trivandrum	South

S.No	Phase of funding	Name of the KI	State/Divisional Office	Zone
80	1	Swarajya Sangh, Krishnapuram, D. No. 64, Pattusali Street, Payakavaopeta,, Vishakhapatnam-531 126	Vishakhapatnam	South
81	1	Shri Yogikrupa Khadi Gramodyog Vikas Sangh, Modasa, Ahmedabad	Ahmedabad	West
82	1	Coimbatore North Sarvodaya Sangh, Coimbatore	Chennai	South
83	1	Kshetriya Shri Gandhi Ashram, Chanauda, Almora (Uttarakhand)	Dehradun	Central
84	1	Kshetriya Shri Gandhi Ashram, Gauchar, Chamoli (Uttarakhand)	Dehradun	Central
85	1	Man Sarovar Uni Khadi Katai Bunai A.U.S. Samiti Ltd., Pithoragarh	Dehradun	Central
86	1	Kshetriya Shri Gandhi Ashram, Barabanki - 225003	Lucknow	Central
87	1	Sitamarhi Zilla Khadi Gramodyog Sangh, Sitamarhi	Patna	East
88	2	Pragati Bahuddeshiya Sansthan	Nagpur	West
89	2	Sarvodaya Samiti Sarguja	Raipur	Central
90	2	Baster Jilla Khadi Gramodyog Sangh, Jagdalpur	Raipur	Central
91	2	Khadi Gramodyog Vikas Sangh, Dhamtari	Raipur	Central
92	2	Kanker Mahila Khadi Sangh Sangh, Kanker	Raipur	Central
93	2	Baster Adimjati Khadi Gramodyog Sangh, Jagdalpur	Raipur	Central
94	2	Khiljit Muga and Khadi Industrial Production Centre, Imphal	Imphal	North-East
95	2	Philanthropic Society, Imphal	Imphal	North-East
96	2	Nirmal Khadi and Village Industries Association, Imphal	Imphal	North-East
97	2	Southern Manipur Development Organization, Imphal	Imphal	North-East
98	2	Mehta Khadi Udhog Gruh, Wadhvan, Ahmedabad	Ahmedabad	West
99	2	Saghan Kshetra Yojana, Patadi, Ahmedabad	Ahmedabad	West
100	2	Surendranagar Zilla Sarvoday Vikas Mandal, Joravarnagar	Ahmedabad	West
101	2	Bharat Khadi Gramodyog Sangh, Ahmedabad	Ahmedabad	West
102	2	Lok Jagruti Seva Sangh Trust, Dholka, Ahmedabad	Ahmedabad	West
103	2	Rural Development Association, Weaver Colony, Bangalore, Banner Ghatta, Dist. Bangalore-560083	Bangalore	South
104	2	Budhima Khadi Silk Patta Industrial Co-operative Society, Sonapur	Bhubaneshwar	East
105	2	Gramya Unnayan Parishad, Sinduria, Nayagarh	Bhubaneshwar	East
106	2	Sarvodaya Samity, Gandhinagar, Koraput	Bhubaneshwar	East
107	2	Boipariguda Kshetra Samity, Gandhipur, Boipariguda	Bhubaneshwar	East
108	2	Ganjam Zilla Khadi Gramodyog Sangh, Kukudakhandi, Ganjam	Bhubaneshwar	East
109	2	Grama Swarajya Sangham, Gooty, Tadipatri, Anantapur -515411	Hyderabad	South
110	2	Sri Rajeshwari Khadi Seva Samiti, Maddikera,	Hyderabad	South

S.No	Phase of funding	Name of the KI	State/Divisional Office	Zone
		Pattikonda, Kurnool Dist.-518385		
111	2	Sri Maruthi Khadi Silk RTW ICS Ltd., Kakkalapally, Anantapuram Dist-515002	Hyderabad	South
112	2	Kodiginehalli Kumbly Cotton and Silk Weavers Coop Product and Sales Society Ltd., Kodigenahalli, Hindupur, Anantapuram Dist.-515212	Hyderabad	South
113	2	Lok Sewa Samiti, Nagar, Bharatpur-321205 (Raj)	Jaipur	North
114	2	Khadi Gramodyog Vikas Samiti, Nadbai, Bharatpur-321602 (Raj)	Jaipur	North
115	2	Nav Nirman Sangh, Udaypur-313001 (Raj)	Jaipur	North
116	2	Khamor Khadi Gramodyog Ut. S.S. Ltd., Shahpura, Bhilwara-311404 (Raj)	Jaipur	North
117	2	Ranpur Mahamaya Khadi Gramodyog Samity, Dist. Bankura - 722207.	Kolkata	East
118	2	Sonamukhi Resham Silpi Samabaya Ltd., Dist-Bankura - 722207	Kolkata	East
119	2	Khadi Silk Silpodyog, Dist-Purulia, Raghunathpur – 723133	Kolkata	East
120	2	Balarampur Sarvoday Gram Swaraj Sangha, Balrampur, Dist-Paschim Midnapur – 721301	Kolkata	East
121	2	Murshidabad Khadi Gramodyog Samity, Murshidabad, Natun Piarapur, Sanmatinagar, Tq. Raghunathganj-II – 742213	Kolkata	East
122	2	Nabin Chandra Resham Khadi Gramodyog Samity, Vill. & PO Gokarna, Dist. Murshidabad - 742136	Kolkata	East
123	2	Nagar Resham Khadi and Gramodyog Sangha, Tq. Kandli, Vill. & PO Nagar, Dist. Murshidabad – 742159	Kolkata	East
124	2	Mirzapur Resham Khadi Samity, Vill. & PO Mirzapur, Dist. Mursidabad, Tq. Mirzapur – 742227	Kolkata	East
125	2	Noor Resham Khadi Samity, Vill. & PO Choto Sujapur, Dist. Malda – 732206	Kolkata	East
126	2	The Chaspara Khadi Samity, Vill. & PO Chaspara, Tq. Kaliachak, Dist. Malda-732206	Kolkata	East
127	2	Memari Kutir Shilpa Prosikhan 'O' Utpadan Kendra, Vill. & PO Takipur, Tq. Bahadur, Dist. Burdwan (WB) - 713146	Kolkata	East
128	2	Gour Gramin Khadi and Silk Samiti, Vill. Uttar Mahadipur, Malda	Kolkata	East
129	2	Margram Panchayat Silk Khadi Vander, Margram, West Bengal	Kolkata	East
130	2	Gram Seva Mandal, Gopuri, Wardha	Nagpur	West
131	2	Nagpur Khadi Mandal, Gandhi Sagar, Nagpur	Nagpur	West
132	2	Bhandara Zilla Sahayak Samiti, Gondiya, Nagpur	Nagpur	West
133	2	Adim Jati Samagra Vikash Parishad, Angara, Dist. Ranchi	Ranchi	East
134	2	Raneshwar Samagra Vikash Parishad, Raneshwar, Dist. Dumka	Ranchi	East
135	2	Kshetriya Shri Gandhi Ashram, Akbarpur, Ambedkar Nagar (UP)	Varanasi	Central

S.No	Phase of funding	Name of the KI	State/Divisional Office	Zone
136	2	Kshetriya Shri Gandhi Ashram, Ratanpura, Gazipur (UP)	Varanasi	Central
137	2	Sambhav Khadi Gramodyog Sansthan, Kudhe Khurd, Chandhauri	Varanasi	Central
138	2	Udaya Khadi Sewa Ashram, Chakiya, Chandauri	Varanasi	Central
139	2	Gandhi Khadi V.I. Production & Sales, ICS Ltd. Nellimarla	Vishakhapatnam	South
140	2	Swarajya Sangh, Vemulapudi, Narsipatnam, Visakhapatnam	Vishakhapatnam	South
141	2	The Puja Khadi Gramodyog Samiti, Haryana	Ambala Cantt	North
142	2	Khadi Udyog Jathlana, Manglai, Haryana	Ambala Cantt	North
143	2	Saraswati Khadi Gramodyog Sangh, Haryana	Ambala Cantt	North
144	2	Gram Swavalambi Vidhyalay, Raniwan, Faizabad (UP)	Lucknow	Central
145	2	Khadi Gramodyog Mandal, Post Rasganj, Dist. Kasganj - 202123	Meerut	Central
146	2	Shri Khadi Vikas Sansthan, Post Ramnagar, Tal Chandpur, Nurpur, Bijnor - 246734	Meerut	Central
147	2	Shri Khadi Sewa Ashram, Gallakheri, Post, Rajakatajpur, Nurpur, Bijnor - 246735	Meerut	Central
148	2	Roshan Gramodyog Sansthan, Sambhal, Vill Santhal, Tal Chandausi - 244414	Meerut	Central
149	2	Sarvoday Khadi Ashram, Chhara, Aligarh, Tal Atnauli - 202123	Meerut	Central
150	2	Kaid Khadi Gramodyog Vikas Samiti, Muradabad, Tal Kath, Post Nodha - 244001	Meerut	Central
151	2	Bunkar Gramodyog Samiti, Chharra, Aligarh - 202130	Meerut	Central
152	2	Gramodyog Seva Samiti, Sambhal, Post Hazaratnagar, Tal Gashi - 244303	Meerut	Central
153	2	Amit Khadi Gramodyog Sansthan, Shamli, Post Khandanawali, Tal, Kainara - 247776	Meerut	Central
154	2	Shanti Niketan Etah, Post Awagarh House, PO Road - 207001	Meerut	Central
155	2	Saghan Kshetra Vikas Samiti, Bareilly, Post Aonla - 243301	Meerut	Central
156	2	Kshetriya Shri Gram Swarajya Ashram, Bareilly, Post Sindawli, Meer Gunj - 243601	Meerut	Central
157	2	Gangotri Khadi Gramodyog Mandal, Amroaha, Post Kakather, Dhanawa, Gujrawla-244235	Meerut	Central
158	2	Shri Patel Sewa Ashram, Jasala, Shamli, Vill. Jasala - 247775	Meerut	Central
159	2	Khadi Gramodyog Mandal, Rampur, Dhanyal, Tal Tanda - 244901	Meerut	Central
160	2	Lok Sewa Ashram, Badaun - 243601	Meerut	Central
161	2	Mahalaxmi Khadi Gramodyog Sansthan, Saharanpur, Bhainamau, Nakur - 247342	Meerut	Central
162	2	Shri Narayan Bhatt Sewa Samiti, Badaun, Mudiya Dhuseki Kasganj, Nagar Panchayat - 202123	Meerut	Central
163	2	Panchal Sewa Sansthan, Saharanpur, Dhenwa, Nakur	Meerut	Central

S.No	Phase of funding	Name of the KI	State/Divisional Office	Zone
		- 247001		
164	2	Rashmi Khadi Gramodyog Sanstha, Saharanpur, Nakur - 247342	Meerut	Central
165	2	Rudayan Gram Vikas Ashram, Sambal - 244302	Meerut	Central
166	2	K.S.G.A., Aligarh, Banna Devi, Dist. Aligarh - 202001	Meerut	Central
167	2	K.S.G.A., Saharanpur, Paper Mill Road - 247001	Meerut	Central
168	2	K.S.G.A., Shikohabad, Firozabad - 283135	Meerut	Central
169	2	Dhirendra Pradhan Gr. Seva Samity, Chandupura, Post Kharkhuda, Jilla Meerut - 245206	Meerut	Central
170	2	Amba Gr. Seva Samity, Vill. Depha, Tal Dholana, Hapur - 245304	Meerut	Central
171	2	Rashtriya Gr. Sansthan, I-B-438, Buddhi Vihar, Delhi Road, Moradabad - 244001	Meerut	Central
172	2	Gramodyog Vikas Mandal, V. Kala Khera, Joya Amroha - 244222	Meerut	Central
173	2	Bhavana Khadi Ashram, Bijnor, HO Mauzampur Jaitra, Dhampur - 246761	Meerut	Central
174	2	Khadi Gr. Ashram, Bijnor, HO Mauzampur, Jaitra, Dhampur - 246761	Meerut	Central
175	2	Shri Khadi Ashram Nindru, Bijnor, HO Ranibagh Colony, Dhampur - 246761	Meerut	Central
176	2	Mahila Khadi Gr. Samiti, Bijnor, Vill. Sharifpur, Khauraj (Ganvadi), PO Nagina - 246762	Meerut	Central
177	2	Janta Khadi Gr. Samiti, KD-115, Kavinagar, Gaziabad-201002	Meerut	Central
178	2	Shree Khadi Gramo. Vikas Vankar Seva Mandal, Surendranagar	Ahmedabad	West
179	2	Zalwad Amber Khadi Gramodyog Sangh, Dusherej	Ahmedabad	West
180	2	Gram Vikas Sangh, Vadodara	Ahmedabad	West
181	2	Saurashtra Gram Vikas Trust, Bhavnagar	Ahmedabad	West
182	2	Vadodara Jilla Khadi Gramodyog Sahakari Sangh Ltd., Vadodara	Ahmedabad	West
183	2	Rashtriya Khadi Gramodyog Samiti, Kesri, Ambala	Ambala Cantt	North
184	2	Amrit Khadi Gramodyog Samiti, Nagala Jattan, Ambala	Ambala Cantt	North
185	2	Mahila Gramodyog Mandal, Chunna Chowk, Ambala	Ambala Cantt	North
186	2	Chirag Arya Khadi Gramodyog Mandal, Panchkula	Ambala Cantt	North
187	2	Suryodaya Khadi Gramodyog Rural Development Society, Mandyampalli	Bangalore	South
188	2	Sri Vinayaka Silk Industrial Association, Khadi Emporium, Gandhi Bhavan Building, V V Road, Mandya Karnataka	Bangalore	South
189	2	Kanakadasa Kuri Sangopan Mattu Unney Utpadak Sahakari Sangh Ltd., Belagavi, Sindolli, Karnataka	Bangalore	South
190	2	TNR Silk Khadi Industries Kariyappalli, Kagathi Post, Chintamani Tq, Chikkaballapur-563125	Bangalore	South
191	2	Babita Khadi Gramodyog Sangha, Melur Post,	Bangalore	South

S.No	Phase of funding	Name of the KI	State/Divisional Office	Zone
		Shidlaghatta, Chikaballapur		
192	2	Indian Khadi Export Development Association, Doddadasarahalli, Sidlaghatta, Chikkabalapur	Bangalore	South
193	2	Chitradurga Sarvodaya Khadi Gramodyog Sangh, Jagaluri	Bangalore	South
194	2	Astadevatha Khadi Gramodyog Sangh, Chatrakodihalli, Kolar	Bangalore	South
195	2	Sri Raghavendraswamy Khadi Gramodyog Sangh, Ammanallur, Kolar-563128	Bangalore	South
196	2	Bharathi Gramodyoga Sangh, Murugamalla, Chintamani, Chikkaballapur-563125	Bangalore	South
197	2	Shreenivasa Khadi Industrial Association, Ram Mohanpura, Bangalore-560021	Bangalore	South
198	2	Seema Resham Khadi Industrialists Association, No. 35, 3rd Main, Kasturba Nagar, Mysore Road, Bangalore-26	Bangalore	South
199	2	Khadi Gramodyog Sangh, Halepalya, Tiptur, Tumkur-572202	Bangalore	South
200	2	Chitradurga Dist. Khadi Coop. Society, Chitradurga-577501	Bangalore	South
201	2	Shri Bhartambe Mahila Khadi and Gramodyog Kaigarika Sangh, Shiramagondanahalli, Davanagere-577005	Bangalore	South
202	2	Nazeen Silk Association Upperpet, Chintamani, Chikkaballapur-563125	Bangalore	South
203	2	Sri Allamprabhu Gramodyog Mattu Shikshan Samsthe, Terdal	Bangalore	South
204	2	Dharwad Taluka Seva Sangh, Dharwad	Bangalore	South
205	2	Aland Khadi Gramodyog Sangh, Aland, Gulbarga	Bangalore	South
206	2	Khadi & Gramodyog Sahakara Sangha Ltd., Holenarasipur, Hassan	Bangalore	South
207	2	Sri Laxmi Khadi Gramodyog Kaigarika Sangha, Burujinahatti	Bangalore	South
208	2	Davangere Charakha and Gramodyog Sahakara Sangha Ltd., Davangere	Bangalore	South
209	2	Akkanagamma Khadi Gramodyog Kaigarika Mahila Mandali, Davangere	Bangalore	South
210	2	Khadi Ashram, Tikamgarh	Bhopal	Central
211	2	Adarsh Khadi Utpadak Sangh, Nuapatana, Cuttack	Bhubaneshwar	East
212	2	Nilachal Exportable Khadi & Gramodyog Sangh, Nuapatna, Cuttack	Bhubaneshwar	East
213	2	Gram Bikash Parishad, Nuapatna, Cuttack	Bhubaneshwar	East
214	2	Shri Gandhi Khadi Gramodyog Sadan, Ripuddaman, Patiala	Chandigarh	North
215	2	Majitha Khadi Gramodyog Mandal, Majitha, Amritsar	Chandigarh	North
216	2	Tiruchirapalli North Sarvodaya Sangh, No. 21 Pidari Koil Street, Tiruchirapalli-620002	Chennai	South
217	2	Arni Sarvodaya Sangh, Arni	Chennai	South

S.No	Phase of funding	Name of the KI	State/Divisional Office	Zone
218	2	Coimbatore South Sarvodaya Sangh	Chennai	South
219	2	Cuddalore Sarvodaya Sangh, Vadalur	Chennai	South
220	2	M Kumarapalayam Sarvodaya Sangh, Mulanur	Chennai	South
221	2	North Arcot Sarvodaya Sangh, Vellore	Chennai	South
222	2	Chingaleput Dist. Sarvodaya Sangh, Kancheepuram	Chennai	South
223	2	Kambal Audyogik Utpadan Sahakari Samiti Ltd., Pidauth, Singhpur, Mau	Gorakhpur	Central
224	2	Audyogik Sansthan, Dharampur, Mau	Gorakhpur	Central
225	2	Bapuji Khadi Silk Swarajya Seva Sangham, Somandepalli, Ananthapur	Hyderabad	South
226	2	Udyog Mandir, Amer, Jaipur, Rajasthan	Jaipur	North
227	2	Kshetriya Khadi Gramodyog Samiti, Lalsot, Dausa, Rajasthan	Jaipur	North
228	2	Uttarpara Resham Khadi Gramodyog Sangha, Margram, Murshidabad	Kolkata	East
229	2	Dubrajpur Block Khadi Industrial Society, Tantipara, Birbhum	Kolkata	East
230	2	Sarvodaya Seva Sangh, Nagar, Murshidabad	Kolkata	East
231	2	Silk Khadi Organization, Berhampore, Murshidabad	Kolkata	East
232	2	Madan Mohan Silk Khadi Samiti, Maheshpur, Malda	Kolkata	East
233	2	Sujapur Resham Khadi Sangha, Brohmotter, Sujapur, Malda	Kolkata	East
234	2	Margram Resham Khadi Gramodyog Sangha, Margram, Murshidabad	Kolkata	East
235	2	Dwarka Tantipara Khadi Sanstha, Dwarka, Birbhum	Kolkata	East
236	2	Mohanpur Silk Khadi Unnayan Samiti, Chaspara, Malda	Kolkata	East
237	2	Murshidabad Resham Khadi Silpa Samiti, khagra, Murshidabad	Kolkata	East
238	2	Ramkrishna Resham Khadi & Palli Unnayan Sanstha, Margram, Murshidabad	Kolkata	East
239	2	Margram Khadi Seva Mandal, Margram, Birbhum	Kolkata	East
240	2	Lalitikunda Silk 'O' Khadi Gramodyog Bhavan, Lalitikunda, Birbhum	Kolkata	East
241	2	Gram Unnayan Khadi and Silk Samiti, Choto Sujapur, Malda	Kolkata	East
242	2	Gour Gramin Silk Unnayan Samiti, Chaspara, Malda	Kolkata	East
243	2	Gramin Khadi Kendra, Gayeshbari, Malda	Kolkata	East
244	2	Gayeshbari Khadi 'O' Gram Seva Sangha, Gayeshbari, Malda	Kolkata	East
245	2	Modern Resham Khadi Samiti, Piarapur, Sanmatinagar, Murshidabad	Kolkata	East
246	2	Jotekamal Mahila Khadi Seva Ashram, Jotekamal, Murshidabad	Kolkata	East
247	2	The Baluachara Khadi Gram Unnayan Samiti, Baluchari, Malda	Kolkata	East

S.No	Phase of funding	Name of the KI	State/Divisional Office	Zone
248	2	Uttarbanga Khadi Pratisthan, Chhoto Sujapur, Malda	Kolkata	East
249	2	Akhtari Resham Silpa Khadi Samiti, Selimpur, Jalalpur, Malda	Kolkata	East
250	2	Bala Silk Khadi Unnayan Sanstha, Balakamalpur, Meherapur, Malda	Kolkata	East
251	2	Mothbari Khadi Samity, Mothabari, Malda	Kolkata	East
252	2	United Silk Khadi Samiti, Piarapur, Sanmatinagar, Murshidabad	Kolkata	East
253	2	Bundelkhand Vikas Sansthan, Jhansi	Lucknow	Central
254	2	Periyakulam Sarvodaya Sangh, 17-A Cumbum Road, Periyakulam-625601, Dist. Theni	Madurai	South
255	2	Aruppukottai Sarvodaya Sangh, 95, Pandalgudi Road, Aruppukottai-626101, Dist. Virudhunagar	Madurai	South
256	2	Virudhunagar Sarvodaya Sangh, 329 Railway Feeder Road, Dist. Virudhunagar-626001	Madurai	South
257	2	Kanyakumari Dist. Sarvodaya Sangh, Kottar, Nagercoil, Dist. Kanyakumari - 629002	Madurai	South
258	2	Nalanda Zilla Khadi Gramodyog Sangh, Nalanda, Bihar	Patna	East
259	2	Makranda Bhandariso Gramodyog Sahyog Samiti Ltd., Dharbhanga	Patna	East
260	2	Resham Khadi Udyog Sangh, Bhagalpur, Bihar	Patna	East
261	2	Samastipur Anumandaliya Khadi Gramodyog Samiti, Samastipur, Bihar	Patna	East
262	2	Sarvodaya Ashram Asthawan, Nalanda, Bihar	Patna	East
263	2	Gram Nirman Samiti, Katarpur, Nalanda, Bihar	Patna	East
264	2	Gram Swaraj Sangh, Bariyarpur, Munger, Bihar	Patna	East
265	2	Purbi Champaran Zilla Khasi Gramodyog Sangh, Motihari, Bihar	Patna	East
266	2	Gram Bharti (Sarvodaya Ashram), Simultala, Jamui, Bihar	Patna	East
267	2	Babhua Anumandal Khadi Gramodyog Sangh, Babhua, Kaimur, Bihar	Patna	East
268	2	Vanvasi Seva Kendra, Babhua, Kaimur, Bihar	Patna	East
269	2	Saraikele Kharsawan Zilla Khadi Gramodyog Sangh, Adityapur, Jamshedpur, Jharkhand	Ranchi	East
270	2	Hiranpur Littipada Samagra Gram Vikas Parishad, Hiranpur, Jharkhand	Ranchi	East
271	2	Gadadhar Mishra Smarak Nidhi, Gandhigram, Godda, Jharkhand	Ranchi	East
272	2	Shikaripara Samagra Vikas Parishad, Shikaripara, Dumaka, Jharkhand	Ranchi	East
273	2	Badlao Foundation, Mihijam, Jamtara, Jharkhand	Ranchi	East
274	2	Khadi Gramodyog Sangh, Govindpur Road, Dhanvad, Jharkhand	Ranchi	East
275	2	Lok Seva Kendra, Purana Chaibasa, West Singhbhum, Jharkhand	Ranchi	East

S.No	Phase of funding	Name of the KI	State/Divisional Office	Zone
276	2	Khadi Gramodyog Sangh, Singhbhoom, Bistupur, Jamshedpur, Jharkhand	Ranchi	East
277	2	Kasturba Khadi Gramodyog Sanstha, Muri, Ranchi	Ranchi	East
278	2	Ranchi Zila Vanvasi Khadi Gramodyog Vikas Sansthan, Ratu Road, Ranchi	Ranchi	East
279	2	Mahadeo Smarak Khadi Gramodyog mandal, Hinoo, Jharkhand	Ranchi	East
280	2	Bhagyanagar Khadi Samiti, Saroornagar, Roshan Bagh, Hyderabad	Telangana	South
281	2	Gadwal Taluka Khadi Gramodyog Sangh, Gadwal, Dist. Mahaboobnagar, Telangana	Telangana	South
282	2	Samagra Lokhit Seva Ashram, Ghazipur	Varanasi	Central
283	2	Saghan Vikas Kshetra Samiti, Raniwa, Ambedkarnagar	Varanasi	Central
284	2	Khadi Kambal Udyog Sansthan, Andharipur, Ghazipur	Varanasi	Central
285	2	Mahadev Khadi Gramodyog Sansthan, Rauza, Ghazipur	Varanasi	Central
286	2	Gram Seva Mandal, Karnal	Ambala Cantt	North
287	2	Amit Khadi Gramodyog Samiti, Karnal, Haryana	Ambala Cantt	North
288	2	Mahila Khadi Niketan, Bhivani Road, Jind, Haryana	Ambala Cantt	North
289	2	Khadi Sewa Mandal, Ramnagar, Karnal, Haryana	Ambala Cantt	North
290	2	Yara Khadi Gramodyog Sangh, Nilokheri, Karnal, Haryana	Ambala Cantt	North
291	2	Sohana Khadi Gramodyog Mandal, Sohana, Gurgaon	Ambala Cantt	North
292	2	Bharatiya Khadi Gram Seva Ashram, Khanpur, Ambala	Ambala Cantt	North
293	2	Sri Beeralingeswara Khadi Rural Development Association, Yennumaladoddi (AP)	Hyderabad	South
294	2	Gramodyog Khadi Silk Society, Ananthapur, AP	Hyderabad	South
295	2	Manikanta Khadi and Silk Development Society, Ananthapur	Hyderabad	South
296	2	Sri Kanaka Dasa Khadi Rural Development Association, Rudrampalli, AP	Hyderabad	South
297	2	Sri Venkateshwara Khadi Rural Development Association, Rudrampalli, AP	Hyderabad	South
298	2	Sri Rama Khadi Rural Development Association, Ontareddypalli AP	Hyderabad	South
299	2	Sri Mylaralingeswara Khadi Rural Development Association, Mahanthpuram, AP	Hyderabad	South
300	2	Kalpataru Seva Samiti, Barra, Kanpur	Lucknow	Central
301	2	Tarun Gramy Vikas Samiti, Kanpur	Lucknow	Central
302	2	Kshetriya Shri Gandhi Ashram, Pilibhit	Lucknow	Central
303	2	Kshetriya Shri Gandhi Ashram, Jhansi	Lucknow	Central
304	2	Resham Gramodyog Sadan, Umreli	Raipur	Central
305	2	Mahila Hastshilp Sanstha, Kataghora	Raipur	Central

S.No	Phase of funding	Name of the KI	State/Divisional Office	Zone
306	2	Mahamaya Khadi Ashram, Amarkantak, Bilashpur	Raipur	Central
307	2	Champa Khadi Gramodyog Mandal, Champa	Raipur	Central
308	2	Gramin Vikas Pratisthan, Sasaholi	Raipur	Central
309	2	Khadi Gramodyog Ashram, Chandauli	Varanasi	Central
310	2	Shree Anand Gramodyog Samiti, Raipur, Dehradun	Dehradun	Central
311	2	Uttar Pradesh Gramodyog Samiti, Harrawala, Dehradun	Dehradun	Central
312	2	Bunkar Khadi Samiti, Udhamsingh Nagar, Jaspur	Dehradun	Central
313	2	Khadi Gramodyog Niketan, Mahuwa Dabra, Jaspur	Dehradun	Central
314	2	Gram Seva Mandal, Jagatpur, Allahabad	Varanasi	Central
315	2	Rangdhari Manav Vikas Sansthan, Jalalpurvi, Chandauli	Varanasi	Central
316	2	Banvasi Seva Ashram, Govindpur, Sonbhadra	Varanasi	Central
317	2	Sri Mahadev Smruti Mandir, Rauza,	Varanasi	Central
318	2	Uni Khadi Gramodyog Sansthan, Ranibazar, Bikaner	Bikaner	North
319	2	Khadi Gramodyog Vikas Samiti, Dungaragar, Bikaner	Bikaner	North
320	2	Shankar Gramodyog, Hariur Tangri, Kuldeep Nagar, Ambala	Ambala Cantt	North
321	2	Raipura Khadi Gramodyog Mandal, Ajmer Basti, Jind	Ambala Cantt	North
322	2	Kissan Khadi Gramodyog Samiti, Kabri, Panipat	Ambala Cantt	North
323	2	Khadi Gramodyog Sangh, Chowki No.2, Kurukshetra	Ambala Cantt	North
324	2	Bellary Dist. Khadi Gr. Sangh, Ittagi	Bangalore	South
325	2	Sri Ranga Khadi. Gr. Sangh, Hosadurga	Bangalore	South
326	2	Khadi Nekkar Sha. Utp. Sangh, Uppinbetegeri	Bangalore	South
327	2	Khadi Seva Sangh, Jalandhar	Chandigarh	North
328	2	Kshetriya Punjab Khadi Mandal, Sujampur	Chandigarh	North
329	2	Gyandeep Mahila Welfare Society, Vill. Bhagatpur, Gurudaspur	Chandigarh	North
330	2	Khadi Gramodyog Vikas Sewa Niketan, Sathiyaon, Azamgarh	Gorakhpur	Central
331	2	A P Seva Sangh, Doimukh	Shillong	North-East
332	2	Cannanore Sarvodaya Sangh, Cannanore	Trivandrum	South
333	2	Arnai Khadi Mandir Samiti, Bhawani Khera, Kurukshetra	Ambala Cantt	North
334	2	Kurubar Kuri Unneya Audyogika Bal.Sha.Sangh Niyamiti, Ranebenur	Bangalore	South
335	2	Khadi Workers Co-operative Society, Ron	Bangalore	South
336	2	Kshetriya Shri Gandhi Ashram, Bamoh, Damoh	Bhopal	Central
337	2	Gramodyog Mandal, Chhota Talab, Chhindwara	Bhopal	Central
338	2	Mahatma Gandhi Seva Ashram, Joura, Morena	Bhopal	Central
339	2	Paham Khadi Gram Udyog Sangha, Paham, West Garo Hills, Mrghalaya	Shillong	North-East

S.No	Phase of funding	Name of the KI	State/Divisional Office	Zone
340	2	Khadi Gramodyog Sangh, Bidar	Bangalore	South
341	2	Jam Khandi Tq. Khandi Gramodyog Sangh, Jam Khandi, Dist Bagalkot 587311	Bangalore	South
342	2	Bellary Ambar Charkha Kushala Karigar Sahakari Sangha, Bellary	Bangalore	South
343	2	Sri Nidhi Khadi & V.I. Association, Surabone, Davangere	Bangalore	South
344	2	Sri Venkateshwara Khadi Gramodyog Sangh, Garudanahalli, Kolar	Bangalore	South
345	2	Swarajya Sangh, Tuni	Vishakhapatnam	South
346	2	Shri Durga Khadi Evam Gramodyog Samiti, Saharanpur	Meerut	Central
347	2	Gramin Mahila Utthan Samiti, Dholana, Pilkhuwa	Meerut	Central
348	2	Dharam Khadi Gramodyog Sewa Sansthan, Shamli, Jasala, Shamli	Meerut	Central
349	2	K S J High School, Ratanpur, Khurd, Dist. Sambhal	Meerut	Central
350	2	Bhatona Gramodyog Sahakari Samiti Ltd., Bhatona, Dist. Bulandsahar	Meerut	Central
351	2	Banswara Zilla Seva Sangh, Pratappur, Gandhi Bhawan, Banswara	Jaipur	North
352	2	Nathnagar Gramodaya Sahyog Samiti Ltd., Nathnagar, Bhagalpur	Patna	East
353	2	Narsinghpur Khadi Kendrit Rachnatmak Samiti Ltd., Muzaffarpur	Patna	East
354	2	Himachal Khadi Ashram, Lakkar Bazar, Shimla	Shimla	North
355	2	Shivalik Khadi Ashram, VPO Santokgharh, Unna	Shimla	North
356	2	Pragatisheel Khadi Gramodyog Samiti, Mandi	Shimla	North
357	2	Himachal Khadi Mandal, Akhara Bazar, Kullu	Shimla	North
358	2	Khadi Gramodyog Samiti, Nerwa, Chopal, Dist. Shimla	Shimla	North
359	2	Shree Sidh Baba Laxman Jati Ji Khadi Gramodyog Vikas Samiti, Dholag, Bilaspur	Shimla	North
360	2	Gramin Vikas Ashram, Majhuwara, Sultanpur	Lucknow	Central
361	2	Nilgiri Dist. Sarvodaya Sangh, Post Udhagamandalam, Nilgiri-643001, Ooty	Chennai	South
362	2	Bhimani Khadi Mandal, Lilpur,	Ahmedabad	West
363	2	Panchmahal Jilla Vikas Sangh, Kolivada, Zhalod	Ahmedabad	West
364	2	Vani Khadi Gramodyog Mandal, Wadhwan, Surendranagar	Ahmedabad	West
365	2	Shree Bhagyoday Seva Sangh, Geetamandir Road Ahmedabad	Ahmedabad	West
366	2	Parimal Khadi Gramodyog Sangh, Nikol Road, Ahmedabad	Ahmedabad	West
367	2	Shri Surendranagar Jills Rachnatmak Khadi Gramodyog Mandal, Surendranagar	Ahmedabad	West
368	2	Parishram Rachnatmak Samiti, Joravarnagar, Surendranagar	Ahmedabad	West

S.No	Phase of funding	Name of the KI	State/Divisional Office	Zone
369	2	Khadi Parivar Trust, Sindhavnagar, Gharshala road, Surendranagar	Ahmedabad	West
370	2	Rural Development Foundation, Ambedkarnagar Surendranagar	Ahmedabad	West
371	2	Shri Sant Savaiyanath Khadi Utkarsh Samiti, Raska, Limbdi.	Ahmedabad	West
372	2	New Vision Trust for Women, Krishna park, Wadhwan,	Ahmedabad	West
373	2	Khadi Avam Gramodyog Vikas Samiti, Mehuwala Mafi, Raipur, Dehradun	Dehradun	Central
374	2	Kaushalya Gramin Vikas Avam Prashikshan, Indra Nagar, Dehradun	Dehradun	Central
375	2	Nabadwip Kutir Shipa Pratishthan. P.O. Nabadwip, Nadia	Kolkata	East
376	2	Alinagar Khadi Resham Shilpi Samity, Najirpur, Alinagar, Malda	Kolkata	East
377	2	Piarapur Resham Bayan Silpi Samabaya Samity Ltd. Piarapur, Murshidabad	Kolkata	East
378	2	Resham Khadi Gramonnayan Silpa Pratisthan, Palpara Ghoshhat, Katwa.	Kolkata	East
379	2	Kadamtala Khadi & Silk Reeling Centre, Jalalpur, Malda	Kolkata	East
380	2	Murshidabad Silk Weavers Co-operative Society Ltd. Chak, islampur	Kolkata	East
381	2	Gohira Resham Khadi "O' Gramodyog Samity, Gohira, Gurulla, Murshidabad	Kolkata	East
382	2	Khadi Vikash Kendra, Tantipara, Birbhum	Kolkata	East
383	2	KGN Silk Khadi Gramodyog Sangh, Kondarajanahalli, Kolar	Bangalore	South
384	2	Laxmeshwar Bhagada Kuri Sangopana Hagu Unneya Audyogika Sahakari Sangh, Niyamit, Laxmeshwar, Gadag Dist.	Bangalore	South
385	2	Tazeen Silk Khadi and Village Industries Association, Kolar	Bangalore	South
386	2	The Ron Taluka Kuri Sangopana Mattu Unney Belavanigaya Sahakara Sangh Ltd., Malluapur, Gadag Dist.	Bangalore	South
387	2	Khadi Silk Industrial Association, Channasandra, Kolar Dist.	Bangalore	South
388	2	Muzaffar Zilla Khadi Gramodyog Sangh, Sarvodaya Gram	Patna	East
389	2	Habibullah Gramin Vikash Khadi & Gramodyog Sangh, Beraghat, Madhubani	Patna	East
390	2	Adarsh Mahila Vikas Sahayog Samity Ltd. Jadishpur, Bhagalpur	Patna	East
391	2	Rosera Anumandaliya Gramodyog Vikas Mandal, Rosera, Samastipur	Patna	East
392	2	Khadi Shilpa Niketan Darima, Jumai	Patna	East
393	2	Vikas Samiti, Parabhawati Gram, Jamui	Patna	East
394	2	Bihar Udyog Mandal, Bihar Sharif, Nalanda	Patna	East

S.No	Phase of funding	Name of the KI	State/Divisional Office	Zone
395	2	Khadi Gramodyog Sansthan, Nagrota, Bagwan	Shimla	North
396	2	Gramin Vikash Seva Sansthan, Goshandepur, Gaziabad	Varanasi	Central
397	2	Gram Kalyan Ashram, Ameda,B-87 Shrinagar Colony Paharia, Varanasi	Varanasi	Central
398	2	Adarsh Kambal Bunker Audhyogic Utpadan Sahakari Samiti, Mohanpurwa, Ghazipur	Varanasi	Central
399	2	Jay Prabha Khadi Gramodyog Pratishthan, Bansdih, Ballia	Varanasi	Central
400	2	Tantipara Tassar Resham Shilpi Sambhav Samiti Ltd.	Kolkata	East

Annexure 3: State and zone wise list of Implements sanctioned under DRA to Khadi Institutions

State/Divisional Office	KIs	Charkha	Basin	Looms	Amount (in INR million)
Central (total)	97	8740	250	1155	170.034
Bhopal	5	375	0	65	7.199
Dehradun	11	755	0	106	14.876
Gorakhpur	4	425	0	50	5.97
Lucknow	12	1525	0	135	21.87
Meerut	38	3955	0	506	76.959
Raipur	10	300	250	140	18.923
Varanasi	17	1305	0	153	24.237
East (total)	104	6257	524	1270	154.102
Bhubaneshwar	8	293	10	205	11.855
Kolkata	61	3926	164	685	100.882
Patna	22	1590	0	198	25.801
Ranchi	13	448	350	182	15.564
North (total)	48	3185	5	567	63.823
Ambala Cantt	21	1575	0	265	33.748
Jaipur	10	820	0	132	16.095
Bikaner	5	365	5	35	5.917
Chandigarh	5	250	0	50	4.463
Shimla	7	175	0	85	3.6
North-East (total)	7	181	94	129	7.258
Guwahati	1	50	0	15	0.927
Imphal	4	87	94	104	5.346
Shillong	2	45	0	10	0.985
South (total)	112	6609	343	1892	177.909
Bangalore	42	2061	211	482	62.796
Chennai	25	1878	37	354	45.181
Madurai	10	925	1	81	17.216
Hyderabad	20	435	94	697	27.47
Telangana	2	75	0	10	1.375
Trivandrum	7	530	0	160	12.921
Vishakhapatnam	6	705	0	108	10.95
West (total)	32	2405	1	432	50.208

State/Divisional Office	KIs	Charkha	Basin	Looms	Amount (in INR million)
Ahmedabad	27	1950	1	369	41.976
Nagpur	5	455	0	63	8.232
Grand Total	400	27277	1217	5445	623.334

Annexure 4: Case Studies

7 KIs across north, south, east, west and central zones were identified on basis of the positive indicators like substantial increase in production and sales, increased earnings for spinners and weavers, as well as multiple innovations using the assistance under DRA.

Case Study 1: 'Innovation' as its key motto- Khadi Gramodyog Sangh (Narar)

Key achievements since implementation of DRA(2012-13 to 2015-16)

- Total cloth production increased by 98%
- Total sales value increased by 99%
- Total employment of spinners on NMC increased by 200%
- Monthly wages of spinners working on NMC increased by over 500%
- Total employment of weavers increased by 66%
- Monthly wages of weavers earning increased by over 100%
- Substantial increase in reserves and surplus of the KI



Located in the village of Mirzapur **at around** 10 kms from the Kurukshetra city, Khadi Gramodyog Sangh (KGS) Narar is setting new standards in 'designing and marketing' of Khadi.

KGS was established in 1990 under the 'Societies Registration Act, 1870'. After the cancellation of the societies registration act by Haryana Govt, KGS registered itself under the 'Indian trust Act, 1882'. The KI produces cotton and woolen based khadi products and its products have a huge demand in the local market. **DRA was awarded to the KI in the year 2013.**

Key innovations/differentiators adopted by the Narar KI are as under:

Production and marketing reforms:

- 125 NMCs and 10 looms procured under KRDP
- Khadi Mark has been adopted
- The KI has made a movie to be telecasted on local cable, which highlights the range of products being developed by the KI.
- The KI has started production of denim khadi **and yoga kits** since July 2015, which has received an overwhelming response from the local market.
- KGS owns 5 sales outlets for sale across Kurukshetra and nearby areas, of which 2 are air-conditioned
- The KI has obtained ISO 9001: 2008 certificate in year 2015
- Diversified sales: through its own sales outlets, through Delhi **Bhawan**, contracting from the railway department
- Piloted sale through popular e-commerce websites (**Flipkart** and **Snapdeal**)

- In-house designer
- Active facebook page and website (kgsnaranar.com) for awareness generation on various products
- Participation in India International Trade Fair as well as other national level exhibitions. The KI is looking forward to participate in international exhibitions this year
- A printed product catalogue developed, promotion of interventions under KRDP using branded bags

Training and capacity building

- 100 artisans trained on the modern equipments procured under DRA support
- 3 Office/bearers staff attended trainings organized by KVIC

IT interventions:

- Operational MIS (connectivity issues are being faced due to limited penetration of internet in the area, the KI is planning on getting a tower installed in its premises to address the same
- IT staff appointed and trained

Gender Empowerment

- 25% female staff (including 1 female Reform Implementation Officer)
- Encouragement to female weavers
- Representation of female artisans and staff in the management committee
- Equal wages for male and female staff (with a provision for 10% yearly hike)

Artisan welfare

- Supported the participation of artisans in national awards.
- National award winning master spinner and weaver in the management committee
- Artisans trained on making bank transactions
- Artisans enrolled in various social welfare schemes- Atal Pension Yojna (20 weavers); Mudra scheme (12 artisans); PPF (2 artisans); National Health Safety Group (25 staff members)
- In-house residential facility for migrant weavers

Financial Reforms

- Initiated the implementation of benefit chart July 2017 onwards

Other innovations

- The KI got an independent assessment of KRDP conducted by a consulting firm
- **Paytm facility and swipe machines installed at sales outlets**



Tags and labels used to generate awareness on 'khadi' as a hand spun hand woven fabric



Readymade 'Denim khadi' pants on sale



Product catalogue highlighting the range of products along with benefits of wearing khadi



Branded carry bags

Case Study 2: Spinning the Charkha of Progress, Udyog Bharti, Gondal

Key achievements since implementation of DRA(2012-13 to 2015-16)

- Total cloth production increased by **26%**
- Total sales value increased by **46%**
- Total employment of spinners on NMC increased by **52%**
- Monthly wages of spinners working on NMC increased by over 45%
- Total employment of weavers increased by **38%**
- Monthly wages of weavers earning increased by over 30%



Located in the town of Gondal around 45kms from Rajkot city, Udyog Bharti Gondal is innovator and has introduced Polyvastra and Solar Charkha to the sector.

Udyog Bharti was established in 1957 under the Public Charitable Trust Act. The KI produces cotton and Polyvastra based Khadi products and its products have a huge demand amongst the young generation. **DRA was awarded to the KI in the year 2013.**

Key innovations/differentiators adopted by the Udyog Bharti are as under:

Production and marketing reforms:

- 153 NMCs and 10 looms procured under KRDP
- Khadi Mark has been adopted
- The KI is a pioneer in Polyvastra P.1 Khadi a 100 count single yarn khadi spun on traditional loom and T.1 100% cotton Khadi made of Suvin Cotton.
- Udyog Bharati has 3 sales outlets across Gondal and nearby areas, all 3 are air-conditioned
- The KI has obtained ISO 9001: 2008 certificate in year 2010
- A printed product catalogue developed, promotion of interventions under KRDP
- Udyog Bharati doesn't only produces NMCs and Looms but is also a well-known training center amongst the Khadi Institutions throughout the country
- Products supplied to major retailers such as Arvind Mills.

Training and capacity building

- 150 artisans trained on the modern equipment's procured under DRA support
- 3 Office/bearers staff attended trainings organized by KVIC

IT interventions:

- MIS is being used effectively for decision making especially related to production and sales
- IT staff appointed and trained

Gender Empowerment

- KI has given priority to employment of women, 'all women' spinning, weaving, warping unit
- Representation of female artisans and staff in the management committee
- Equal wages for male and female staff
- Special incentives for female staff on achievement of spinning and weaving targets

Artisan welfare

- Artisan welfare measures extended, health check-ups also organised
- Previously transport service (bus) was also provided for artisans
- Bank set up by the KI, has facility of lockers – helpful in additional financial support to artisans through need-based loans

Financial Reforms

- Initiated the implementation of benefit chart September 2017 onwards

Other innovations

- KI innovating with special packaging of products to attract footfall of young generation.



Own additional funds used for renovation of Sales Outlet in addition to DRA



Own NMC manufacturing unit



Bank for Artisans with locker facility



New-age packaging for attracting younger generation towards Khadi

Case study 3: 'New designs with new technology along with adapting market competition' is the key motto- of Shri Gandhi Seva Sadan (Bayana, Rajasthan)

Key achievements since implementation of DRA(2015-16)

- Total cloth production worth Rs. 2.5 million has increased
- Total sales value increased by approximately 6-7%
- Wages of spinners working on traditional charkha increased from Rs. 19.35 to Rs. 23.55 (for 4 course point)
- For the welfare of staff and workers, 16 months wages/salary is given i.e. incentive for 4 months
- Work-sets are prepared for artisans for their better convenience



Located in the village of Bayana **at around** 40 kms from the Bharatpur city, Shri Gandhi Seva Sadan (SGSS) was established in 1967 under Rajasthan Society Act, 1958. **DRA was awarded to this KI in 2015-16.**

SGSS produces both cotton and woolen based khadi products and the products have a decent demand in the local market. However, it is worthy to note that this khadi institute seems to be still struggling with funding requirements and other basic facilities such as electrical and internet connectivity needed to run machines and computer to achieve its desired goals. SGSS has not yet implemented the 'Benefit Chart' and CFC is also non-operational.

Key innovations/differentiators adopted by the Bayana KI are as under:

Production and marketing reforms:

- 100 NMCs procured under KRDP
- Khadi Mark has been adopted
- The KI has started advertising about its products and discounts offered on special occasions in newspapers and magazines like Rajasthan Patrika, Amar Ujala, Dainik Bhaskar, etc.
- SGSS has 7 branches spread across the state of Rajasthan
- Diversified sales: through its own sales outlets and other KIs across the country
- Promotion of their products using branded bags
- Sales outlet got renovated on 2 October 2017 and benefits are yet to be realized. Belief is that there would be 15-20% jump in sales

Training and capacity building

- KVIC has recently released fund for training and the training to be imparted is still under process
- Artisans yet to be trained on the modern equipment procured under DRA support
- People to receive training: weavers, spinners, secretary, accountant, salesman and production assistant

IT interventions:

- Non Operational MIS (connectivity issues are being faced due to limited penetration of internet in the area, the KI is planning on getting a tower installed in its premises to address the same. Also, commission server is not frequently operational)
- IT staff is managing data online thereby saving a lot of time
- IT staff appointed on contractual basis for a year

Gender Empowerment

- 84% female staff (all engaged in spinning as it requires less time and effort and they can manage their household chores)
- Men are engaged in weaving
- Representation of 1 female artisan in management committee
- Equal wages (paid according to cost chart) for male and female staff (with a provision of 10% incentive by KI)

Artisan welfare

- All artisans enrolled in various social welfare schemes- JBY, Artisan Welfare Fund
- KI also offers 'Artisan work-set' to its artisans
- Amount of Rs.1200 given for education of artisan's children

Financial Reforms

- No financial reforms implemented as yet

Other innovations

- Fully air-conditioned sales outlet
- SGSS is working on designing new product packaging to attract customers

Key challenges/ issues identified

- Working capital provided is too short
- Machines in CFC are not yet operational due to no electricity
- IT server is not working most of the time
- Benefit chart has not been implemented since premium product out of which surplus could be generated is yet to be identified by KI

- Training has not been imparted yet
- Women artisans are unwilling to leave their homes and work under worksheds
- Artisans feel that wages paid are too low to earn bread and butter for their families
- **SGSS has no action points to increase women participation**



Khadi products on sale with khadi mark and logo of KI



Khadi Sales outlet in Bavana



Some machines at CFC



Branded carry bags with details of other branches of KI

Case Study 4- Gandhigram Khadi and Village Industry Public Charitable Trust

Key achievements since implementation of DRA(2012-13 to 2015-16)

- Increase in efficiency by 5%
- Use of hydro-extractor reduces time and effort by 50%
- Fuel (firewood) use reduced by 60% through use of fuel-saving stove
- Since renovation of sales outlet, increase in sales by 30%
- Fabric sales to Kalpa Druma (Chennai) and Azure (Pan-India presence). The institution aims to meet the quality standards of Raymonds, and sell to them as well.



Located in Dindigul district of Tamil Nadu, Gandhigram Khadi and Village Industry Public Charitable Trust also functions as a deemed university, engaging in research related to khadi industry. The institution has conducted renowned research in natural dyes, establishing linkages all over the world for the same.

Gandhigram was established in 1947, and registered with KVIC in 1972. The Trust produces khadi textiles, personal and home care products like shampoo and soap, leather (bags, footwear) and food products (amla juice, snacks, health drinks and powders). It sources raw material from the surrounding villages, and employs people from there as well. **DRA was awarded to the Trust in the year 2014.**

Key innovations/differentiators adopted by the Gandhigram KI are as under:

Production and marketing reforms:

- 75 new charkhas procured under DRA
- 8 new looms procured
- Designs reviewed in collaboration with National Institute of Design and National Institute of Fashion Technology, Chennai, new designs created and existing stock recycled
- Dyeing unit upgraded with hydro-extractor, jigger machine and fuel-saving stove
- Khadi Bhavan renovated and stocked with textiles, and village industry products, to offer a holistic shopping experience

Training and capacity building

- 25 spinners given training on operation of new charkhas – upgraded from six-cylinder to eight-cylinder charkhas
- 7 retail staff given Salesmanship training

IT interventions:

- KiVis software implemented
- Computers procured under DRA and employment and wage records computerized since 2015-16

- IT personnel appointed with a tenure of one year
- Reform Implementation Officer appointed with tenure of three years

Gender Empowerment

- Women artisans engaged in self-help-group get personal loans for household needs like children's education, medical emergencies, and family functions
- One woman spinner is a member of the management committee, and the spinners are informed about resolutions passed in each meeting

Artisan welfare

- All artisans enrolled in Janashri Bima Yojana and Artisan Welfare Fund which offers them emergency funds for personal needs
- Weavers given funds to construct their own homes within the campus, and live close to the production units

Financial Initiatives

- Rs. 1.4 million received under DRA as working capital

Other innovations

- Advertisements in FM Radio, Banners on Highways which have extolled the benefits of khadi and village industry products, and the range of products on offer at the outlets. The advertisements on highways has resulted in more footfall to the outlet.



Tags and labels used to generate awareness on 'khadi' as a hand spun hand woven fabric

Dhotis and Shirts on sale



Advertisement for Khadi products



Renovated Sales Outlet

Case Study 5- Madurai West Sarvodaya Sangh- Thirumangalam

Key achievements since implementation of DRA(2012-13 to 2015-16)

- Increase in productivity by 30% after installation of new charkhas
- Reduction in fuel usage by 50%
- Increase in sales by 100% since introduction of ready-made shirts
- Export to Khadi Societies in Bangalore



The Sangh is located in Thirumangalam town, 20 kilometres away from Madurai city. It employs artisans from the surrounding villages as spinners and home-based weavers.

The Madurai West Sarvodaya Sangh was established in 1977, and has been registered with KVIC since then. The Sangh produces Khadi and silk textiles, personal and home care products (soap and shampoo), furniture and food products (health powder, fruit juice, dry fruit and nuts, and sweets). It has recently started producing ready-made shirts, which have been successful in the market. The silk saris produced by the Sangh enjoy great demand in the market **DRA was awarded to the Sangh in the year 2014.**

Key innovations/differentiators adopted by the Sangh are as under:

Production and marketing reforms:

- 75 new charkhas procured under DRA
- 5 new handlooms procured under DRA
- Jigger machine, Hydro-extractor procured
- Renovation of sales outlet
- Production of ready-made shirts and women's clothing

Training and capacity building

- 25 spinners given training
- One spinner and two weavers taken to Kerala for special training

IT interventions:

- IT Assistant appointed with a tenure of one year
- Reform Implementation Officer appointed with a tenure of three years

Gender Empowerment

- 2 artisans on Management Committee- both are women
- Weavers have their own SHGs, which they use to get personal loans

Artisan welfare

- All artisans enrolled under Artisan Welfare fund
- For the year 2016-17, artisans given uniform allowance in the form of khadi textiles
- Artisans also granted commission of 10% on textiles sold during Diwali season, as well as

overtime wage of Rs. 180 per day

Financial Reforms

- Rs. 1.4 million was received under DRA as working capital

Other innovations

- Advertisements on TV, which extol the benefits of khadi, and describe the products on offer
- Publicity and sales in vans in colleges has led to increased awareness and demand among youth for khadi products.



Renovated Bhavan

New Designs



Ready-made shirt with Khadi Mark

Branded carry bags

Case study 6: Satish Sarvodaya Varati (Murshidabad)

Key achievements since implementation of DRA (2012-13 to 2015-16)

- Total sales value increased by 35%
- Total employment of spinners on NMC increased by 120%
- Monthly wages of spinners working on NMC increased by over 150%
- Total employment of weavers increased by over 25%
- Monthly wages of weavers earning increased by over 35%



Satish Sarvodaya Varati is setting new standards in the Khadi market through its involvement since the last 55 years in 6 districts of West Bengal, including a total of 14 blocks in the state.

The KI has the ownership of 9 production centres and 4 exclusive sales outlets, out of which 7 production centres and 2 sales outlets are located in 9 out of 26 blocks of Murshidabad. **DRA was awarded to the KI in the financial year of 2013-14.**

Key innovations/differentiators adopted by the Satish Sarvodaya Varati are as under:

Production and marketing reforms:

- 45 NMCs procured under KRDP
- Khadi Mark has been adopted
- The KI has made a short video which is being telecasted on local cable, which highlights the range of products being developed by the KI along with regular newspaper ads
- The KI owns 4 exclusive sales outlets for sale across West Bengal, all of which are air-conditioned and have CCTV cameras and digital display of the range of products available in the outlets. Along with this, the KI owns 3 production centres cum sales outlets which have similar facilities as well.
- The KI has obtained ISO 9001: 2008 certificate in year 2005-06
- Piloted sale through popular e-commerce website like indiamart
- Social Media Presence: Active facebook, twitter page and website (www.ssvkhadibambu.org) for awareness generation on various products. The KI has uploaded a number of videos of the various khadi products in you tube as well.
- Participation in national level exhibitions in Ranchi, Bangalore, Delhi, Lucknow and Assam. The KI is looking forward to participate in international exhibition this year in the International Trade Fair, 2017. The KI has been awarded as the best performing KI in the eastern zone along with a National Award for excellence in the field of Khadi and Village Industries in the year 2014-15
- A printed product catalogue developed, promotion of interventions under KRDP using branded bags

Training and capacity building

- 273 artisans trained on the modern equipment procured under DRA support
- 14 Office/bearers staff attended trainings provided by KVIC including the quality management

training

- In-house counselling and trainings to the artisans as and when required

IT interventions:

- Operational MIS
- Staff Appointment: 5 MIS staff appointed and trained along with 2 marketing personnel

Gender Empowerment

- 33% female staff across the production units and sales outlets of the KI
- Encouragement to female weavers
- Representation of female artisans and staff in the management committee: 40%
- Equal wages for male and female staff

Artisan welfare

- Supported the construction of 26 worksheds in 2016-17 along with the development of a total of 139 worksheds since 2008-09 till 2016-17
- Supported the participation of artisans in national awards and facilitated their visit to other state level award ceremonies
- National award winning master weaver in the management committee
- Artisans trained on financial literacy and banking transactions
- Enrolment of over 98% of the artisans in the JBY scheme
- Provision of regular eye check-ups and spectacles to the artisans
- Distribution of awards and certificates to artisans who have been with the institution for more than 10-15 years on the 55th Foundation Day of the KI

Financial Reforms

- The KI plans on implementation of benefit chart November 2017 onwards

Other innovations

- Swipe machines installed at all the sales outlets
- Mannequins in the outlets for better display of clothes



Renovated Sales Outlets



Artisans working with the NMCs



Branded carry bags



Product catalogue highlighting the range of products along with benefits of wearing khadi

Case study 7: Gramin Kutir Silpa Bhaban (Jiaganj)

Key achievements since implementation of DRA (2012-13 to 2015-16)

- Total employment of spinners on NMC increased by 85%
- Monthly wages of spinners working on NMC increased by over 140%
- Monthly wages of weavers earning increased by over 40%



Gramin Kutir Silpa Bhaban was established in 1977 and has been associated with KVIC since 1980. The KI has been instrumental in supporting the khadi artisans of the district as well as reviving the khadi sector.

The KI provides a range of products including silk khadi shirt, muslin khadi shirt, muslin khadi goods, silk kurtas and silk khadi & muslin khadi sarees. **DRA was awarded to the KI in the financial year of 2013-14.**

Key innovations/differentiators adopted by the Gramin Kutir Silpa Bhaban are as under:

Production and marketing reforms:

- 40 NMCs and 4 looms procured under KRDP
- Khadi Mark has been adopted
- The KI has made a short video which is being telecasted on local cable, which highlights the range of products being developed by the KI along with regular newspaper ads
- The KI owns 2 exclusive sales outlets for sale across district of Murshidabad, both of which are air-conditioned and have CCTV cameras and digital display of the range of products available in the outlets. One outlet, located in Berhampore has automatic glass doors as well.
- The KI has obtained ISO 9001: 2008 certificate in year 2010
- Piloted sale through popular e-commerce website like indiamart
- Social Media Presence: Active facebook, and twitter page for awareness generation on various products.
- Participation in national level exhibitions in Delhi including state level exhibitions in West Bengal and Jharkhand. The KI has been awarded as the best performing KI in the eastern zone in 2009
- Promotion of interventions under KRDP using branded bags

Training and capacity building

- 50 artisans trained on the modern equipment procured under DRA support
- 3 Office/bearers staff attended trainings provided by KVIC regarding quality management training including 2 instructors and 2 MIS officers

IT interventions:

- Operational MIS with 1 staff constantly engaged in monitoring and other IT related tasks

- Staff Appointment: 1 marketing personnel

Gender Empowerment

- 20% female staff (including 1 female Reform Implementation Officer)
- Encouragement to female weavers
- Representation of female artisans and staff in the management committee: 25%
- Equal wages for male and female staff

Artisan welfare

- Supported the construction and renovation of a total of 44 worksheds since 2008-09 till 2016-17
- Supported the participation of artisans in national awards and facilitated their visit to other state level award ceremonies
- Artisans trained on banking transactions
- Enrolment of over 96% of the artisans in the JBY scheme

Financial Reforms

- The KI plans on implementation of benefit chart 2018 onwards

Other innovations

- Swipe machines installed at all the sales outlets



Renovated Sales Outlets



Artisans working with the NMCs



Branded carry bags



Artisans working with the looms